

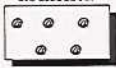

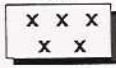


VIBRACORE LOG							
PROJECT: <u>LIDO KEY SAND SEARCH BORROW AREA 4</u> CORE NO: <u>LKVC - 19</u>							
COORINATES: N = 1085550 E = 272959	DATE: JAN. 27, 1995 START TIME: 1350 END TIME: 1355	WATER DEPTH: 35.0 Ft. NGVD DRILLER: EXMAR CLIENT REP: M. D. ANDREWS					
CORE DIAMETER: 2.5" LENGTH OF BARREL: 12.0' PENETRATION DEPTH: 5.0' LENGTH RECOVERED: 4.3' LENGTH RETAINED : 4.3'	ELEV.	DEPTH	LEGEND	DESCRIPTION	SAMP NO.	REMARKS	
	35.0'	0.0	~	GRAY (N6), FINE / MEDIUM GRAINED SAND WITH CALCAREOUS SHELL HASH	1	1.46 Phi 0.36 mm 2.3 % SILT (SP)	
			~		1.0'		
			~		36.0		
			~				
SUPPORT VESSEL: EXMAR II  POSITIONING: DGPS MOTOROLA LGT 1000 / USCG BEACON	37.0'	2.0	~	LIGHT GREENISH GRAY (10Y 7/1) FINE / MEDIUM GRAINED SAND	2	2.76 Phi 0.15 mm 8.2 % SILT (SP - SM)	
		2.5	~		2.5'		
			~		37.5		
WEATHER:  WIND: DIR: VAR. SPEED: LIGHT  WAVES: DIR: VAR. HEIGHT: 0 - 1 Ft.  CURRENT: DIR: SOUTH SPEED: LIGHT	39.3'	4.3	~	NOT RECOVERED X X X X X	3	2.57 Phi 0.17 mm 23.2 % SILT (SS)	
	40.0'	5.0	~		4.1'		
ANALYSIS BY: MDA  ANALYSIS METHOD: VISUAL LOGGING MECHANICAL SIEVE				ROCK	39.1		
<div style="display: flex; justify-content: space-around;"> <div style="text-align: center;"> <p>SAND</p>  </div> <div style="text-align: center;"> <p>SHELLS</p>  </div> </div> <div style="display: flex; justify-content: space-around; margin-top: 10px;"> <div style="text-align: center;"> <p>ROCK FRAG.</p>  </div> <div style="text-align: center;"> <p>SHELL HASH</p>  </div> </div> <div style="text-align: center; margin-top: 10px;"> <p>ROCK</p>  </div>		7.5					
		10.0					

NOTE: MEAN WAS CALCULATED USING MOMENT METHOD

NOTE: COORDINATE SYSTEM - FLORIDA STATE PLANE NAD 1927

NOTE: CORE WEIGHTED COMPOSITE 0.22 mm

**COASTAL PLANNING & ENGINEERING, INC**

GRADATION ANALYSIS REPORT  
LIDO KEY VIBRACORE JAN. 1995  
TESTED BY: MDA ON: 03-02-95

SAMPLE NO.: LKVC-19 S1  
SAMPLE ELEV. (FT. NGVD): -36.0  
SAMPLE DEPTH (FT.): -1.0  
SAMPLE TYPE: CORE SAMPLE

USCS DESCRIPTION: SP

DRY SAMPLE WEIGHT (GRAMS): 69.86  
SAMPLE WEIGHT AFTER WASH (GRAMS): 68.38

SIEVE SIZE	PHI SIZE	MESH SIZE (mm)	RETAINED (GRAMS)	RETAINED (%)	PASSED (%)
5/8	-4.0	16.000	.00	.00	100.00
5/16	-3.0	8.000	.00	.00	100.00
5	-2.0	4.000	.45	.64	99.36
7	-1.5	2.800	.91	1.30	98.70
10	-1.0	2.000	1.58	2.26	97.74
14	-0.5	1.400	3.32	4.75	95.25
18	0.0	1.000	6.94	9.93	90.07
25	0.5	.710	15.85	22.69	77.31
35	1.0	.500	27.76	39.74	60.26
45	1.5	.355	34.91	49.97	50.03
60	2.0	.250	42.49	60.82	39.18
80	2.5	.180	50.63	72.47	27.53
120	3.0	.125	64.15	91.83	8.17
170	3.5	.090	67.82	97.08	2.92
200	3.75	.075	68.24	97.68	2.32
230	4.0	.063	69.06	98.85	1.15
PAN			69.82	99.94	.06

PHI(5): -.48 PHI(16): .24 PHI(25): .57  
PHI(50): 1.50 PHI(75): 2.57 PHI(84): 2.80  
PHI(95): 3.30

SIEVE LOSS(g): .04 SILT/CLAY: 2.32%  
SKEWNESS: -.177 KURTOSIS: .775

GRAPHIC METHOD

MEAN (PHI): 1.47 SORTING: 1.28  
MEAN (mm): .36 MEDIAN (mm): .35  
NOTE: MEAN WAS CALCULATED USING 5 POINT METHOD

MOMENT METHOD

MEAN (PHI): 1.46 SORTING: 1.21  
MEAN (mm): .36

DATA FILE NAME: LKVC19S1.TAB

GRADATION ANALYSIS REPORT  
LIDO KEY VIBRACORE JAN. 1995  
TESTED BY: MDA ON: 03-02-95

SAMPLE NO.: LKVC-19 S2  
SAMPLE ELEV. (FT. NGVD): -37.5  
SAMPLE DEPTH (FT.): -2.5  
SAMPLE TYPE: CORE SAMPLE

USCS DESCRIPTION: SP-SM

DRY SAMPLE WEIGHT (GRAMS): 60.00  
SAMPLE WEIGHT AFTER WASH (GRAMS): 55.57

SIEVE SIZE	PHI SIZE	MESH SIZE (mm)	RETAINED (GRAMS)	RETAINED (%)	PASSED (%)
5/8	-4.0	16.000	.00	.00	100.00
5/16	-3.0	8.000	.00	.00	100.00
5	-2.0	4.000	.00	.00	100.00
7	-1.5	2.800	.00	.00	100.00
10	-1.0	2.000	.14	.23	99.77
14	-0.5	1.400	.35	.58	99.42
18	0.0	1.000	.74	1.23	98.77
25	0.5	.710	1.62	2.70	97.30
35	1.0	.500	3.03	5.05	94.95
45	1.5	.355	4.22	7.03	92.97
60	2.0	.250	6.39	10.65	89.35
80	2.5	.180	10.78	17.97	82.03
120	3.0	.125	35.03	58.38	41.62
170	3.5	.090	52.16	86.93	13.07
200	3.75	.075	55.09	91.82	8.18
230	4.0	.063	57.74	96.22	3.78
PAN			60.00	100.00	.00

PHI(5): .99 PHI(16): 2.37 PHI(25): 2.59  
PHI(50): 2.90 PHI(75): 3.29 PHI(84): 3.45  
PHI(95): 3.93

SIEVE LOSS(g): .00 SILT/CLAY: 8.18%  
SKEWNESS: -.873 KURTOSIS: 1.712

GRAPHIC METHOD

MEAN (PHI): 2.73 SORTING: .54  
MEAN (mm): .15 MEDIAN (mm): .13

NOTE: MEAN WAS CALCULATED USING 5 POINT METHOD

MOMENT METHOD

MEAN (PHI): 2.76 SORTING: .78  
MEAN (mm): .15

DATA FILE NAME: LKVC19S2.TAB



GRADATION ANALYSIS REPORT  
LIDO KEY VIBRACORE JAN. 1995  
TESTED BY: MDA ON: 03-02-95

SAMPLE NO.: LKVC-19 S3  
SAMPLE ELEV. (FT. NGVD): -39.1  
SAMPLE DEPTH (FT.): -4.1  
SAMPLE TYPE: CORE SAMPLE

USCS DESCRIPTION: SS

DRY SAMPLE WEIGHT (GRAMS): 62.82  
SAMPLE WEIGHT AFTER WASH (GRAMS): 49.17

SIEVE SIZE	PHI SIZE	MESH SIZE (mm)	RETAINED (GRAMS)	RETAINED (%)	PASSED (%)
5/8	-4.0	16.000	.00	.00	100.00
5/16	-3.0	8.000	.00	.00	100.00
5	-2.0	4.000	1.84	2.93	97.07
7	-1.5	2.800	2.37	3.77	96.23
10	-1.0	2.000	3.02	4.81	95.19
14	-0.5	1.400	3.83	6.10	93.90
18	0.0	1.000	4.72	7.51	92.49
25	0.5	.710	6.27	9.98	90.02
35	1.0	.500	8.35	13.29	86.71
45	1.5	.355	9.63	15.33	84.67
60	2.0	.250	11.31	18.00	82.00
80	2.5	.180	14.20	22.60	77.40
120	3.0	.125	23.65	37.65	62.35
170	3.5	.090	41.49	66.05	33.95
200	3.75	.075	48.26	76.82	23.18
230	4.0	.063	55.87	88.93	11.07
PAN			62.77	99.92	.08

PHI(5): -.93      PHI(16): 1.63      PHI(25): 2.58  
PHI(50): 3.22      PHI(75): 3.71      PHI(84): 3.90  
PHI(95): 4.13

SIEVE LOSS(g): .05      SILT/CLAY: 23.18%  
SKEWNESS: -3.235      KURTOSIS: 1.835

GRAPHIC METHOD

MEAN (PHI): 2.39      SORTING: 1.14  
MEAN (mm): .19      MEDIAN (mm): .11

NOTE: MEAN WAS CALCULATED USING 5 POINT METHOD

MOMENT METHOD

MEAN (PHI): 2.57      SORTING: 1.53  
MEAN (mm): .17

DATA FILE NAME: LKVC19S3.TAB

PERCENT COARSER BY WEIGHT

PERCENT FINER BY WEIGHT

GRAIN SIZE IN PHI UNITS

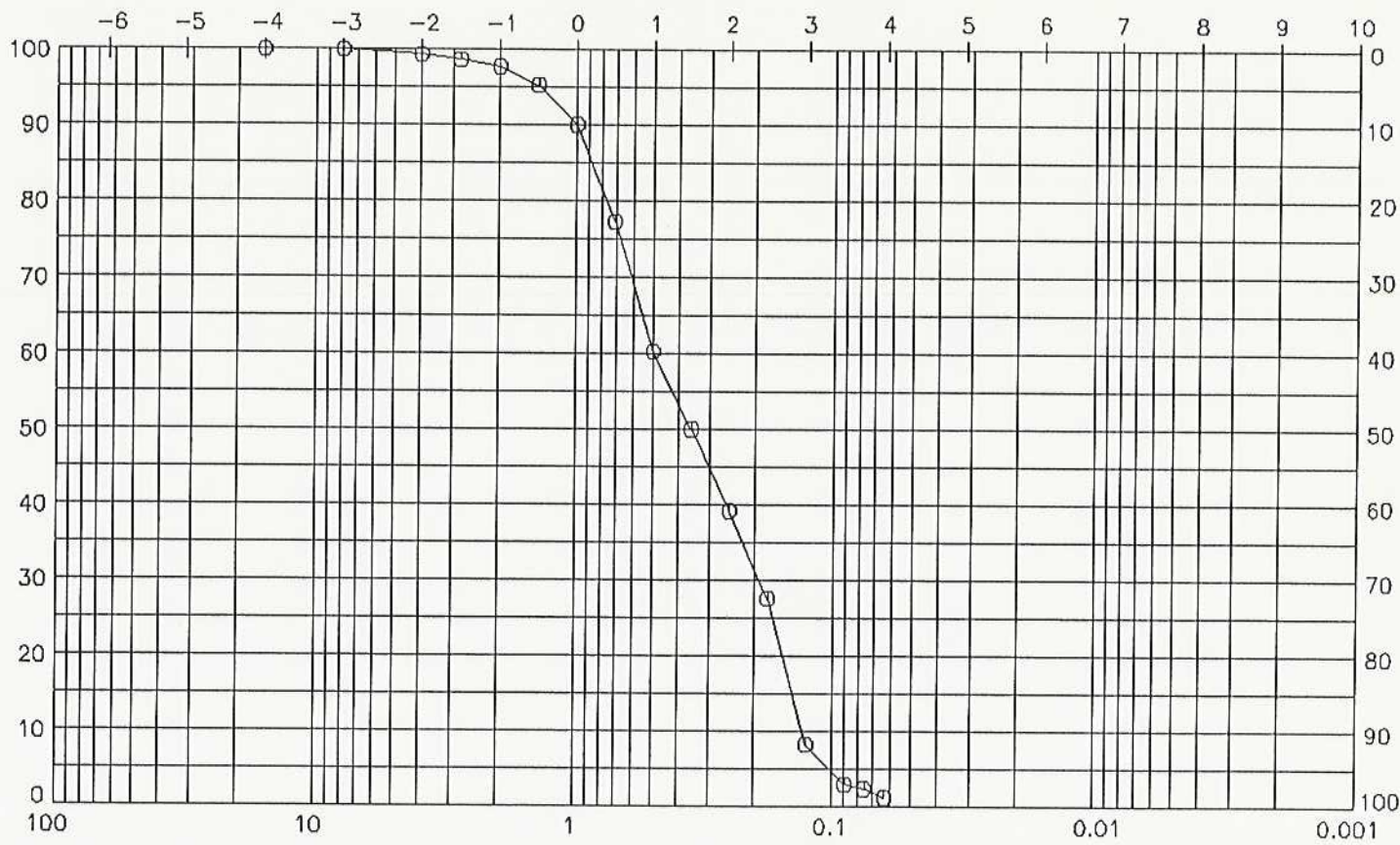
GRAIN SIZE IN MILLIMETERS

WENTWORTH CLASSIFICATION

PEBBLE	GRAVEL	SAND			SILT	CLAY
		COARSE	MED.	FINE		

SAMPLE NO.	SAMPLE ELEV.	SAMPLE DEPTH	USCS CLASS.	MEAN SIZE (mm)	MEDIAN SIZE (mm)	SORTING
LKVC-19 S10	-36.0	-1.0	SP	0.36	0.35	1.28

GRAIN SIZE DISTRIBUTION CURVE  
LIDO KEY VIBRACORE JAN. 1995





GRAIN SIZE IN PHI UNITS

PERCENT FINER BY WEIGHT

PERCENT COARSER BY WEIGHT

GRAIN SIZE IN MILLIMETERS

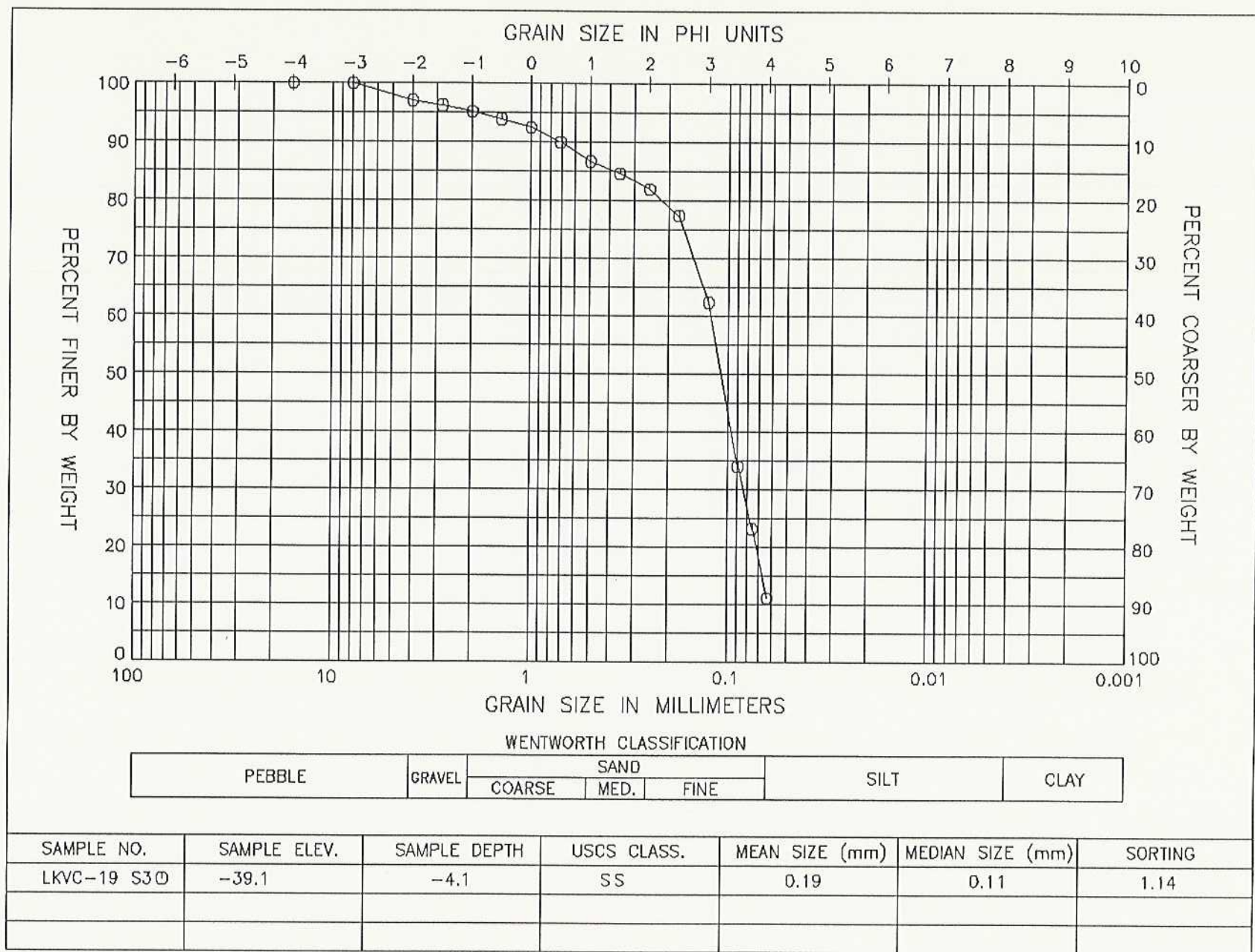
WENTWORTH CLASSIFICATION

PEBBLE	GRAVEL	SAND			SILT	CLAY
		COARSE	MED.	FINE		

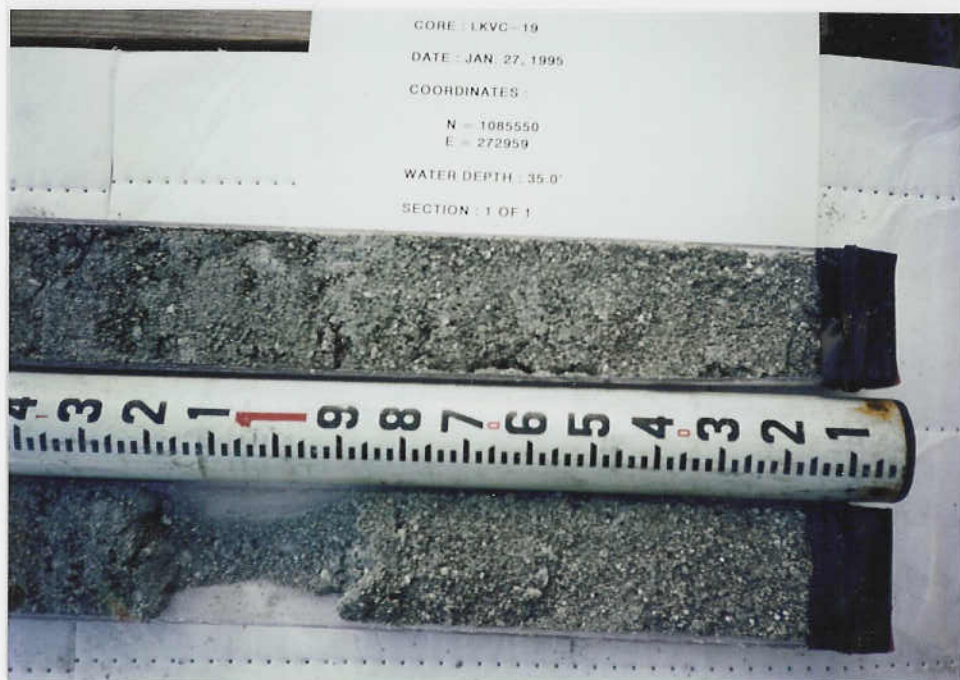
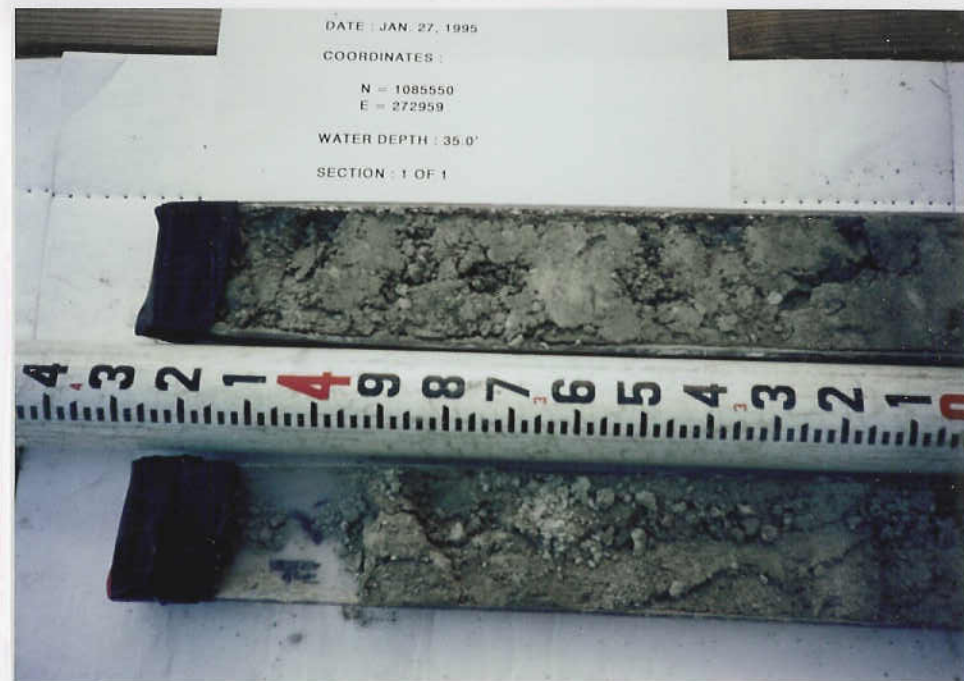
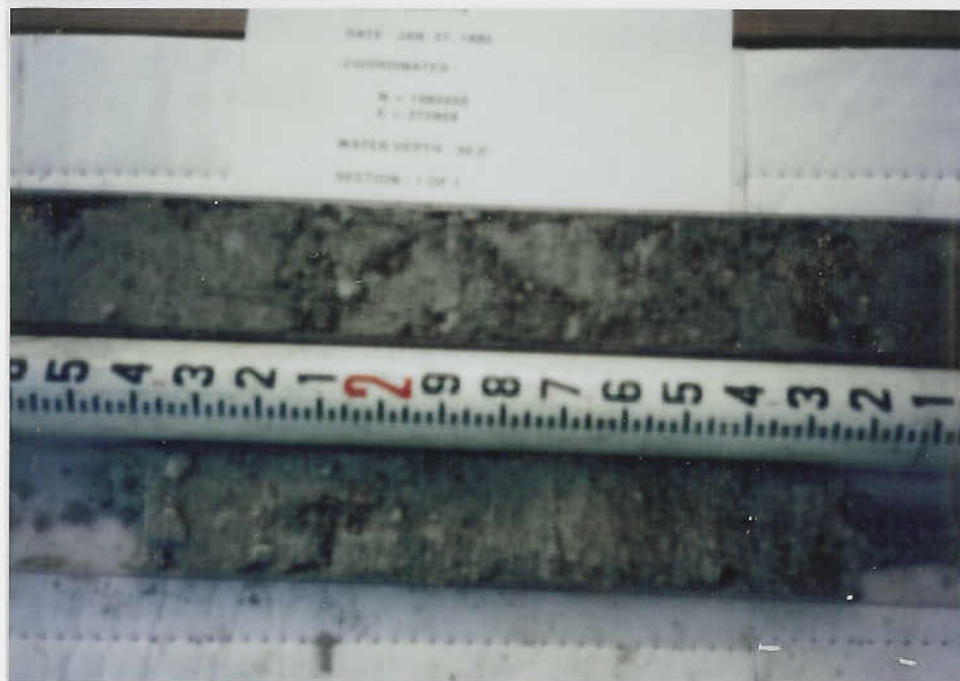
SAMPLE NO.	SAMPLE ELEV.	SAMPLE DEPTH	USCS CLASS.	MEAN SIZE (mm)	MEDIAN SIZE (mm)	SORTING
LKVC-19 S20	-37.5	-2.5	SP-SM	0.15	0.13	0.54

SAMPLE NO.	SAMPLE ELEV.	SAMPLE DEPTH	USCS CLASS.	MEAN SIZE (mm)	MEDIAN SIZE (mm)	SORTING
LKVC-19 S2O	-37.5	-2.5	SP-SM	0.15	0.13	0.54

GRAIN SIZE DISTRIBUTION CURVE  
LIDO KEY VIBRACORE JAN. 1995







LKVC-19