
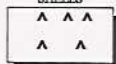

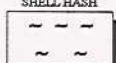



VIBRACORE LOG						
PROJECT: LIDO KEY SAND SEARCH BORROW AREA 1 CORE NO: LKVC - 10						
COORDINATES: N = 1075694 E = 279416	DATE: JAN. 26, 1995 START TIME: 1420 END TIME: 1424	WATER DEPTH: 35.0 Ft. NGVD DRILLER: EXMAR CLIENT RE P : M. D. ANDREWS				
CORE DIAMETER: 2.5"	ELEV.	DEPTH	LEGEND	DESCRIPTION	SAMP NO.	REMARKS
LENGTH OF BARREL: 12.0'	34.5'	0.0				
PENETRATION DEPTH: 4.0'			~	GRAY (N6), FINE / MEDIUM GRAINED SAND WITH	1	2.60 Phi
LENGTH RECOVERED: 3.2'	35.3'	0.8	~	CALCAROUS SHELL HASH	0.5'	0.17 mm
LENGTH RETAINED : 3.1'					35.0	10.2 % SILT (SP - SM)
SUPPORT VESSEL: EXMAR II				LT GRAY (N7), FINE / MED. GRAINED SAND WITH CALCAROUS SHELL HASH		
POSITIONING: DGPS MOTOROLA LGT 1000 / USCG BEACON		2.5			2	2.81 Phi
WEATHER:	37.6'	3.1			2.5'	13.3 % SILT (SS)
WIND:			NOT RECOVERED		37.0	
DIR: NORTH	38.5'	4.0	X X X	ROCK		
SPEED: 10 Kt			X X			
WAVES:		5.0				
DIR: NW						
HEIGHT: 1 - 2 Ft.						
CURRENT:						
DIR: SOUTH						
SPEED: MODERATE						
ANALYSIS BY : MDA		7.5				
ANALYSIS METHOD: VISUAL LOGGING MECHANICAL SIEVE						
<div style="display: flex; justify-content: space-around;"> <div style="text-align: center;"> <p>SAND</p>  </div> <div style="text-align: center;"> <p>SHELLS</p>  </div> </div> <div style="display: flex; justify-content: space-around; margin-top: 10px;"> <div style="text-align: center;"> <p>ROCK FRAG.</p>  </div> <div style="text-align: center;"> <p>SHELL HASH</p>  </div> </div> <div style="text-align: center; margin-top: 10px;"> <p>ROCK</p>  </div>		10.0				

NOTE: MEAN WAS CALCULATED USING MOMENT METHOD
 NOTE: COORDINATE SYSTEM - FLORIDA STATE PLANE NAD 1927
 NOTE : CORE WEIGHTED COMPOSITE 0.15 mm

COASTAL PLANNING & ENGINEERING, INC

GRADATION ANALYSIS REPORT
LIDO KEY VIBRACORE JAN. 1995
TESTED BY: MDA ON: 02-27-95

SAMPLE NO.: LKVC-10 S1
SAMPLE ELEV. (FT. NGVD): -35.5
SAMPLE DEPTH (FT.): -0.5
SAMPLE TYPE: CORE SAMPLE

USCS DESCRIPTION: SP-SM

DRY SAMPLE WEIGHT (GRAMS): 65.79
SAMPLE WEIGHT AFTER WASH (GRAMS): 59.55

SIEVE SIZE	PHI SIZE	MESH SIZE (mm)	RETAINED (GRAMS)	RETAINED (%)	PASSED (%)
5/8	-4.0	16.000	.00	.00	100.00
5/16	-3.0	8.000	.00	.00	100.00
5	-2.0	4.000	.26	.40	99.60
7	-1.5	2.800	.46	.70	99.30
10	-1.0	2.000	.80	1.22	98.78
14	-0.5	1.400	1.54	2.34	97.66
18	0.0	1.000	2.49	3.78	96.22
25	0.5	.710	4.30	6.54	93.46
35	1.0	.500	6.54	9.94	90.06
45	1.5	.355	7.70	11.70	88.30
60	2.0	.250	9.77	14.85	85.15
80	2.5	.180	17.58	26.72	73.28
120	3.0	.125	37.52	57.03	42.97
170	3.5	.090	55.23	83.95	16.05
200	3.75	.075	59.11	89.85	10.15
230	4.0	.063	62.57	95.11	4.89
PAN			65.74	99.92	.08

PHI(5): .22 PHI(16): 2.05 PHI(25): 2.43
PHI(50): 2.88 PHI(75): 3.33 PHI(84): 3.50
PHI(95): 3.99

SIEVE LOSS(g): .05 SILT/CLAY: 10.15%
SKEWNESS: -1.552 KURTOSIS: 1.707

GRAPHIC METHOD

MEAN (PHI): 2.53 SORTING: .73
MEAN (mm): .17 MEDIAN (mm): .14
NOTE: MEAN WAS CALCULATED USING 5 POINT METHOD

MOMENT METHOD

MEAN (PHI): 2.60 SORTING: 1.07
MEAN (mm): .17

DATA FILE NAME: LKVC10S1.TAB

GRADATION ANALYSIS REPORT
LIDO KEY VIBRACORE JAN. 1995
TESTED BY: MDA ON: 02-27-95

SAMPLE NO.: LKVC-10 S2
SAMPLE ELEV. (FT. NGVD): -37.5
SAMPLE DEPTH (FT.): -2.5
SAMPLE TYPE: CORE SAMPLE

USCS DESCRIPTION: SS

DRY SAMPLE WEIGHT (GRAMS): 60.52
SAMPLE WEIGHT AFTER WASH (GRAMS): 53.15

SIEVE SIZE	PHI SIZE	MESH SIZE (mm)	RETAINED (GRAMS)	RETAINED (%)	PASSED (%)
5/8	-4.0	16.000	.00	.00	100.00
5/16	-3.0	8.000	.00	.00	100.00
5	-2.0	4.000	.29	.48	99.52
7	-1.5	2.800	.40	.66	99.34
10	-1.0	2.000	.69	1.14	98.86
14	-0.5	1.400	1.04	1.72	98.28
18	0.0	1.000	1.42	2.35	97.65
25	0.5	.710	2.19	3.62	96.38
35	1.0	.500	3.07	5.07	94.93
45	1.5	.355	3.80	6.28	93.72
60	2.0	.250	5.50	9.09	90.91
80	2.5	.180	11.61	19.18	80.82
120	3.0	.125	28.52	47.12	52.88
170	3.5	.090	47.49	78.47	21.53
200	3.75	.075	52.49	86.73	13.27
230	4.0	.063	56.75	93.76	6.24
PAN			60.47	99.92	.08

PHI(5): .98 PHI(16): 2.34 PHI(25): 2.60
PHI(50): 3.05 PHI(75): 3.44 PHI(84): 3.67
PHI(95): 4.04

SIEVE LOSS(g): .05 SILT/CLAY: 13.27%
SKEWNESS: -1.073 KURTOSIS: 1.496

GRAPHIC METHOD

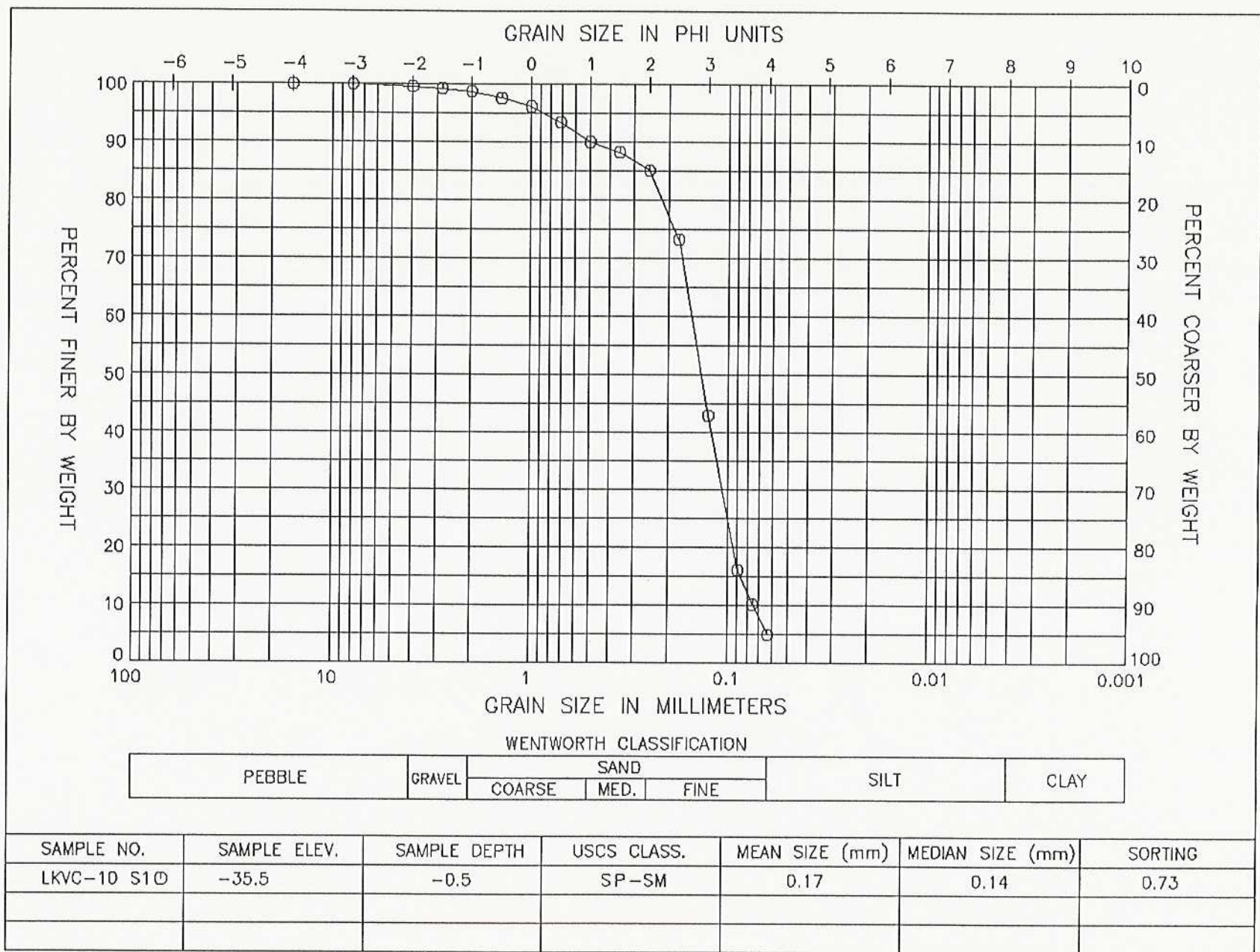
MEAN (PHI): 2.81 SORTING: .66
MEAN (mm): .14 MEDIAN (mm): .12
NOTE: MEAN WAS CALCULATED USING 5 POINT METHOD

MOMENT METHOD

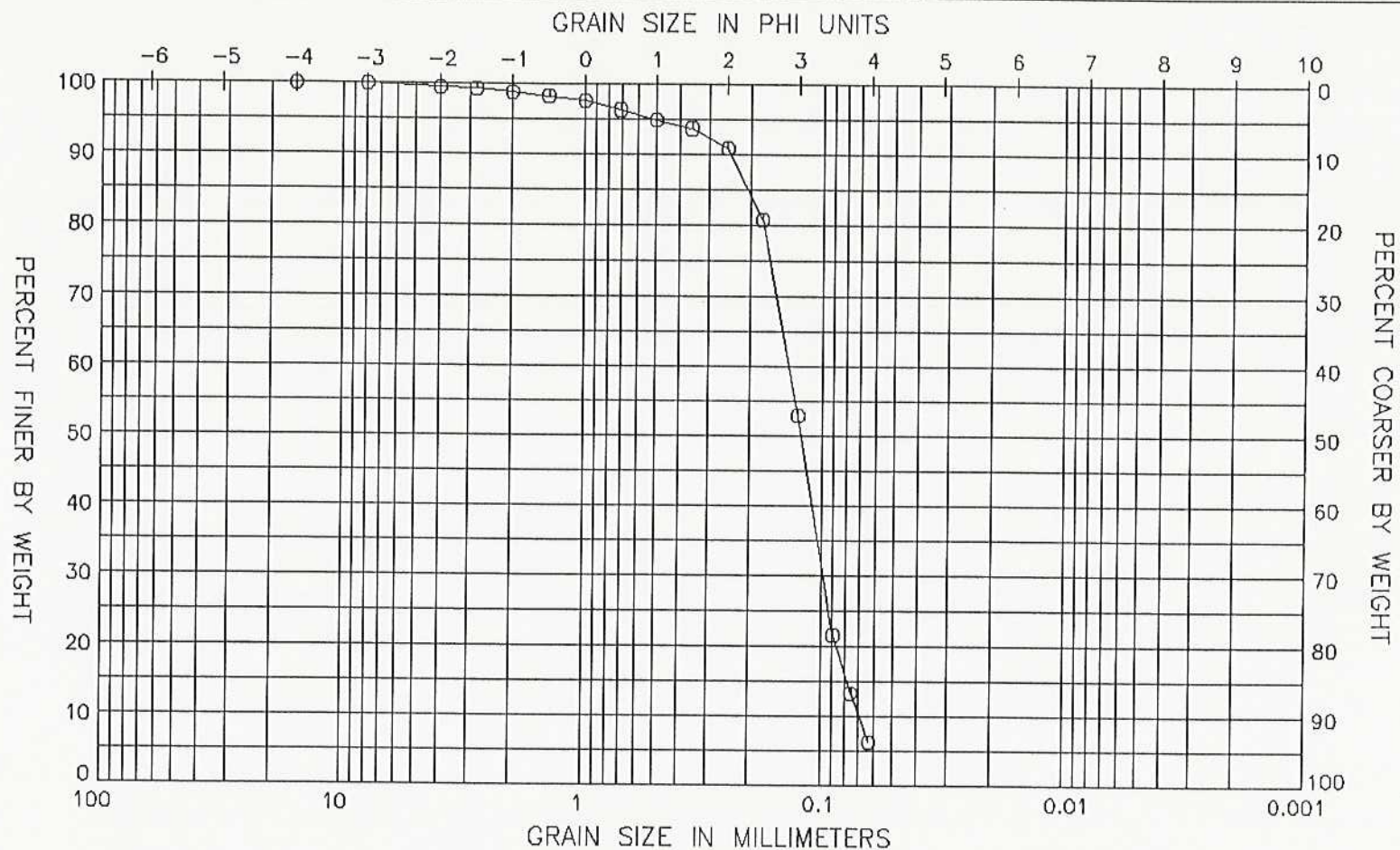
MEAN (PHI): 2.81 SORTING: .93
MEAN (mm): .14

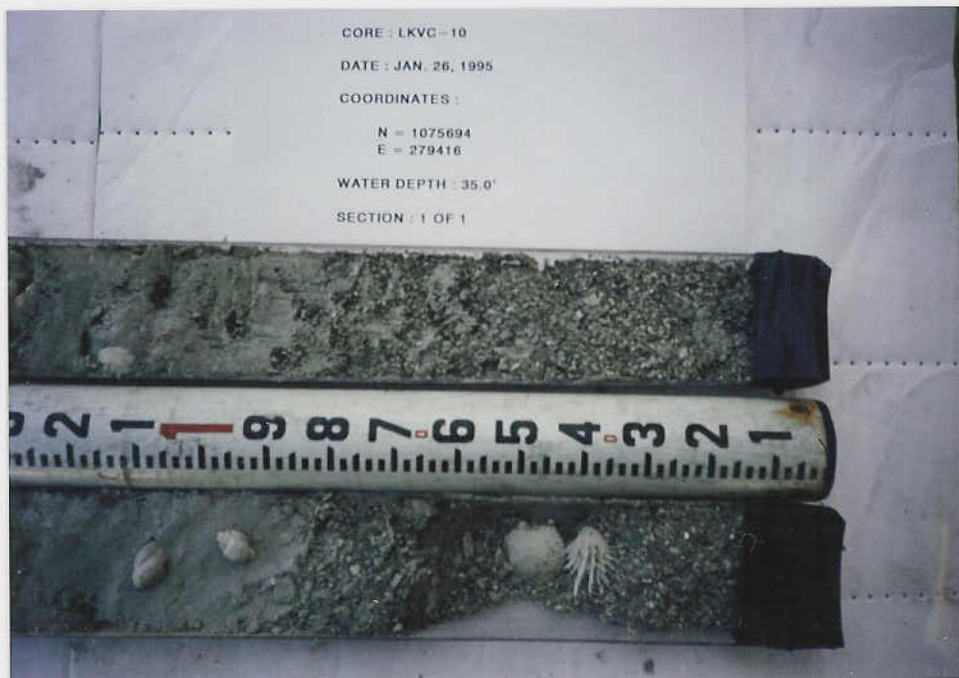
DATA FILE NAME: LKVC10S2.TAB

GRAIN SIZE DISTRIBUTION CURVE
LIDO KEY VIBRACORE JAN. 1995



GRAIN SIZE DISTRIBUTION CURVE
LIDO KEY VIBRACORE JAN. 1995





LKVC-10

