

GRADATION ANALYSIS REPORT
LIDO KEY VIBRACORE JAN. 1995
TESTED BY: MDA ON: 03-02-95

SAMPLE NO.: LKVC-18 S1
SAMPLE ELEV. (FT. NGVD): -36.4
SAMPLE DEPTH (FT.): -1.0
SAMPLE TYPE: CORE SAMPLE

USCS DESCRIPTION: SS

DRY SAMPLE WEIGHT (GRAMS): 67.53
SAMPLE WEIGHT AFTER WASH (GRAMS): 59.85

SIEVE SIZE	PHI SIZE	MESH SIZE (mm)	RETAINED (GRAMS)	RETAINED (%)	PASSED (%)
5/8	-4.0	16.000	.00	.00	100.00
5/16	-3.0	8.000	.00	.00	100.00
5	-2.0	4.000	.18	.27	99.73
7	-1.5	2.800	.41	.61	99.39
10	-1.0	2.000	.93	1.38	98.62
14	-0.5	1.400	1.59	2.35	97.65
18	0.0	1.000	2.61	3.86	96.14
25	0.5	.710	4.75	7.03	92.97
35	1.0	.500	7.71	11.42	88.58
45	1.5	.355	9.75	14.44	85.56
60	2.0	.250	12.37	18.32	81.68
80	2.5	.180	16.64	24.64	75.36
120	3.0	.125	37.26	55.18	44.82
170	3.5	.090	55.55	82.26	17.74
200	3.75	.075	59.38	87.93	12.07
230	4.0	.063	63.60	94.18	5.82
PAN			67.49	99.94	.06

PHI(5): .18 PHI(16): 1.70 PHI(25): 2.51
PHI(50): 2.92 PHI(75): 3.37 PHI(84): 3.58
PHI(95): 4.03

SIEVE LOSS(g): .04 SILT/CLAY: 12.07%
SKEWNESS: -1.619 KURTOSIS: 1.836

GRAPHIC METHOD

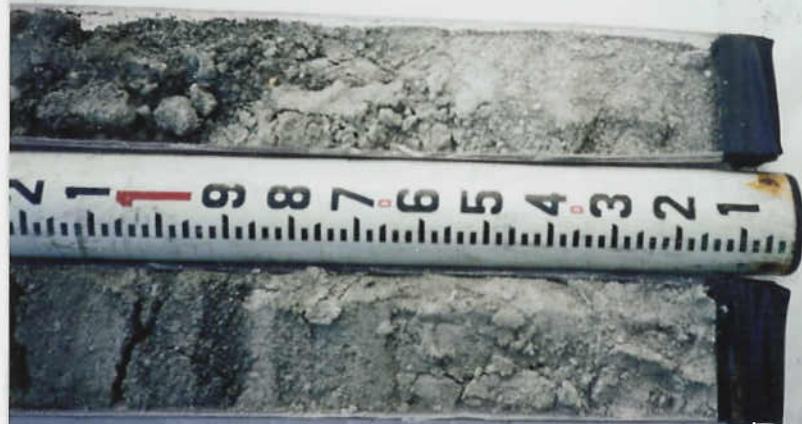
MEAN (PHI): 2.48 SORTING: .94
MEAN (mm): .18 MEDIAN (mm): .13
NOTE: MEAN WAS CALCULATED USING 5 POINT METHOD

MOMENT METHOD

MEAN (PHI): 2.57 SORTING: 1.12
MEAN (mm): .17

DATA FILE NAME: LKVC18S1.TAB

CORE : LKVC-18A
 DATE : JAN 27, 1995
 COORDINATES :
 N = 1085113
 E = 272798
 WATER DEPTH : 35.0'
 SECTION : 1 OF 1

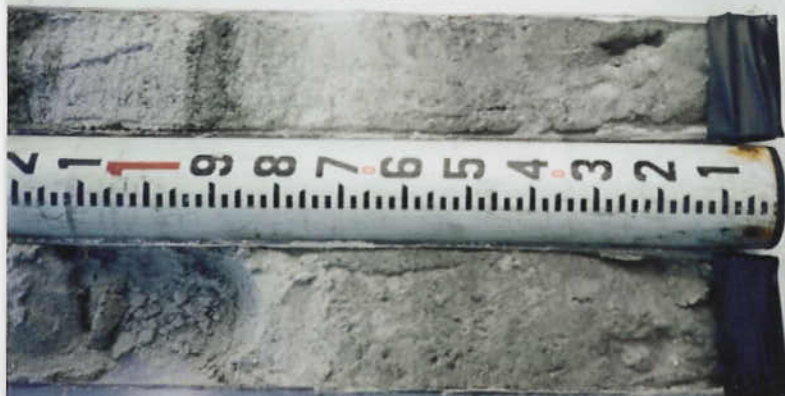


LKVC-18A

DATE : JAN 27, 1995
 COORDINATES :
 N = 1085113
 E = 272798
 WATER DEPTH : 35.0'
 SECTION : 1 OF 1



PROJECT : LIDO KEY SAND SEARCH VIBROCORE
 CORE : LKVC-18
 DATE : JAN 27, 1995
 COORDINATES :
 N = 1084730
 E = 272634
 WATER DEPTH : 35.5'
 SECTION : 1 OF 1



LKVC-18

DATE : JAN 27, 1995
 COORDINATES :
 N = 1084730
 E = 272634
 WATER DEPTH : 35.5'
 SECTION : 1 OF 1

