

VIBRACORE LOG							
PROJECT: LIDO KEY SAND SEARCH BORROW AREA 4 CORE NO: LKVC - 16							
COORDINATES:		DATE: JAN. 27, 1995		WATER DEPTH: 33.5 Ft. NGVD			
N = 1085604		START TIME: 1114		DRILLER: EXMAR			
E = 272233		END TIME: 1121		CLIENT REP : M. D. ANDREWS			
CORE DIAMETER:	2.5"	ELEV.	DEPTH	LEGEND	DESCRIPTION	SAMP NO.	REMARKS
LENGTH OF BARREL:	12.0'	33.5'	0.0		LIGHT GREENISH GRAY (10Y 7/1) FINE / MEDIUM GRAINED SAND	1 1.0' 34.5	2.34 Phi 0.20 mm 2.9 % SILT (SP)
PENETRATION DEPTH:	6.0'						
LENGTH RECOVERED:	4.5'						
LENGTH RETAINED :	4.4'						
SUPPORT VESSEL:	EXMAR II	34.6'	1.6				
POSITIONING: DGPS			2.5			2 2.5'	2.74 Phi 0.15 mm 8.7 % SILT (SP - SM)
MOTOROLA LGT 1000 / USCG BEACON						36.0	
WEATHER :							
WIND :							
DIR : NE							
SPEED : LIGHT							
WAVES :		37.9'	4.4			3 4.3'	2.88 Phi 0.14 mm 14.2% SILT (SS)
DIR : EAST			5.0			37.8	
HEIGHT: 0 - 1 Ft.							
CURRENT :				NOT RECOVERED			
DIR : SOUTH		39.5'	6.0				
SPEED : LIGHT				X X X X X	ROCK		
ANALYSIS BY : MDA							
ANALYSIS METHOD:							
VISUAL LOGGING							
MECHANICAL SIEVE			7.5				
SAND							
SHELLS							
ROCK FRAG.							
SHELL HASH							
ROCK			10.0				
X X X X X							

NOTE: COORDINATE SYSTEM - FLORIDA STATE PLANE NAD 1927

NOTE : CORE WEIGHTED COMPOSITE 0.16 mm

COASTAL PLANNING & ENGINEERING, INC

GRADATION ANALYSIS REPORT
LIDO KEY VIBRACORE JAN. 1995
TESTED BY: MDA ON: 03-02-95

SAMPLE NO.: LKVC-16 S1
SAMPLE ELEV. (FT. NGVD): -34.5
SAMPLE DEPTH (FT.): -1.0
SAMPLE TYPE: CORE SAMPLE

USCS DESCRIPTION: SP

DRY SAMPLE WEIGHT (GRAMS): 63.75
SAMPLE WEIGHT AFTER WASH (GRAMS): 61.99

SIEVE SIZE	PHI SIZE	MESH SIZE (mm)	RETAINED (GRAMS)	RETAINED (%)	PASSED (%)
5/8	-4.0	16.000	.00	.00	100.00
5/16	-3.0	8.000	.00	.00	100.00
5	-2.0	4.000	.12	.19	99.81
7	-1.5	2.800	.45	.71	99.29
10	-1.0	2.000	.91	1.43	98.57
14	-0.5	1.400	1.24	1.95	98.05
18	0.0	1.000	1.73	2.71	97.29
25	0.5	.710	2.99	4.69	95.31
35	1.0	.500	5.75	9.02	90.98
45	1.5	.355	9.17	14.38	85.62
60	2.0	.250	15.89	24.93	75.07
80	2.5	.180	25.67	40.27	59.73
120	3.0	.125	51.81	81.27	18.73
170	3.5	.090	61.20	96.00	4.00
200	3.75	.075	61.87	97.05	2.95
230	4.0	.063	62.82	98.54	1.46
PAN			63.71	99.94	.06

PHI(5): .54 PHI(16): 1.58 PHI(25): 2.00
PHI(50): 2.62 PHI(75): 2.92 PHI(84): 3.09
PHI(95): 3.47

SIEVE LOSS(g): .04 SILT/CLAY: 2.95%
SKEWNESS: -1.236 KURTOSIS: 1.304

GRAPHIC METHOD

MEAN (PHI): 2.26 SORTING: .76
MEAN (mm): .21 MEDIAN (mm): .16
NOTE: MEAN WAS CALCULATED USING 5 POINT METHOD

MOMENT METHOD

MEAN (PHI): 2.34 SORTING: .94
MEAN (mm): .20

DATA FILE NAME: LKVC16S1.TAB

GRADATION ANALYSIS REPORT
LIDO KEY VIBRACORE JAN. 1995
TESTED BY: MDA ON: 03-02-95

SAMPLE NO.: LKVC-16 S2
SAMPLE ELEV. (FT. NGVD): -36.0
SAMPLE DEPTH (FT.): -2.5
SAMPLE TYPE: CORE SAMPLE

USCS DESCRIPTION: SP-SM

DRY SAMPLE WEIGHT (GRAMS): 75.17
SAMPLE WEIGHT AFTER WASH (GRAMS): 69.22

SIEVE SIZE	PHI SIZE	MESH SIZE (mm)	RETAINED (GRAMS)	RETAINED (%)	PASSED (%)
5/8	-4.0	16.000	.00	.00	100.00
5/16	-3.0	8.000	.00	.00	100.00
5	-2.0	4.000	.52	.69	99.31
7	-1.5	2.800	.84	1.12	98.88
10	-1.0	2.000	1.35	1.80	98.20
14	-0.5	1.400	2.06	2.74	97.26
18	0.0	1.000	2.74	3.65	96.35
25	0.5	.710	3.80	5.06	94.94
35	1.0	.500	5.21	6.93	93.07
45	1.5	.355	6.33	8.42	91.58
60	2.0	.250	8.21	10.92	89.08
80	2.5	.180	11.97	15.92	84.08
120	3.0	.125	37.63	50.06	49.94
170	3.5	.090	64.28	85.51	14.49
200	3.75	.075	68.61	91.27	8.73
230	4.0	.063	72.07	95.88	4.12
PAN			75.12	99.93	.07

PHI(5): .48 PHI(16): 2.50 PHI(25): 2.63
PHI(50): 3.00 PHI(75): 3.35 PHI(84): 3.48
PHI(95): 3.95

SIEVE LOSS(g): .05 SILT/CLAY: 8.73%
SKEWNESS: -1.566 KURTOSIS: 1.979

GRAPHIC METHOD

MEAN (PHI): 2.68 SORTING: .49
MEAN (mm): .16 MEDIAN (mm): .13
NOTE: MEAN WAS CALCULATED USING 5 POINT METHOD

MOMENT METHOD

MEAN (PHI): 2.74 SORTING: 1.03
MEAN (mm): .15

DATA FILE NAME: LKVC16S2.TAB

GRADATION ANALYSIS REPORT
LIDO KEY VIBRACORE JAN. 1995
TESTED BY: MDA ON: 03-02-95

SAMPLE NO.: LKVC-16 S3
SAMPLE ELEV. (FT. NGVD): -37.8
SAMPLE DEPTH (FT.): -4.3
SAMPLE TYPE: CORE SAMPLE

USCS DESCRIPTION: SS

DRY SAMPLE WEIGHT (GRAMS): 63.35
SAMPLE WEIGHT AFTER WASH (GRAMS): 55.52

SIEVE SIZE	PHI SIZE	MESH SIZE (mm)	RETAINED (GRAMS)	RETAINED (%)	PASSED (%)
5/8	-4.0	16.000	.00	.00	100.00
5/16	-3.0	8.000	.00	.00	100.00
5	-2.0	4.000	.00	.00	100.00
7	-1.5	2.800	.21	.33	99.67
10	-1.0	2.000	.55	.87	99.13
14	-0.5	1.400	1.02	1.61	98.39
18	0.0	1.000	1.60	2.53	97.47
25	0.5	.710	2.70	4.26	95.74
35	1.0	.500	4.16	6.57	93.43
45	1.5	.355	5.10	8.05	91.95
60	2.0	.250	6.42	10.13	89.87
80	2.5	.180	8.78	13.86	86.14
120	3.0	.125	24.23	38.25	61.75
170	3.5	.090	47.55	75.06	24.94
200	3.75	.075	54.35	85.79	14.21
230	4.0	.063	59.22	93.49	6.51
PAN			63.28	99.89	.11

PHI(5): .66 PHI(16): 2.54 PHI(25): 2.73
PHI(50): 3.16 PHI(75): 3.50 PHI(84): 3.71
PHI(95): 4.05

SIEVE LOSS(g): .07 SILT/CLAY: 14.21%
SKEWNESS: -1.610 KURTOSIS: 1.802

GRAPHIC METHOD

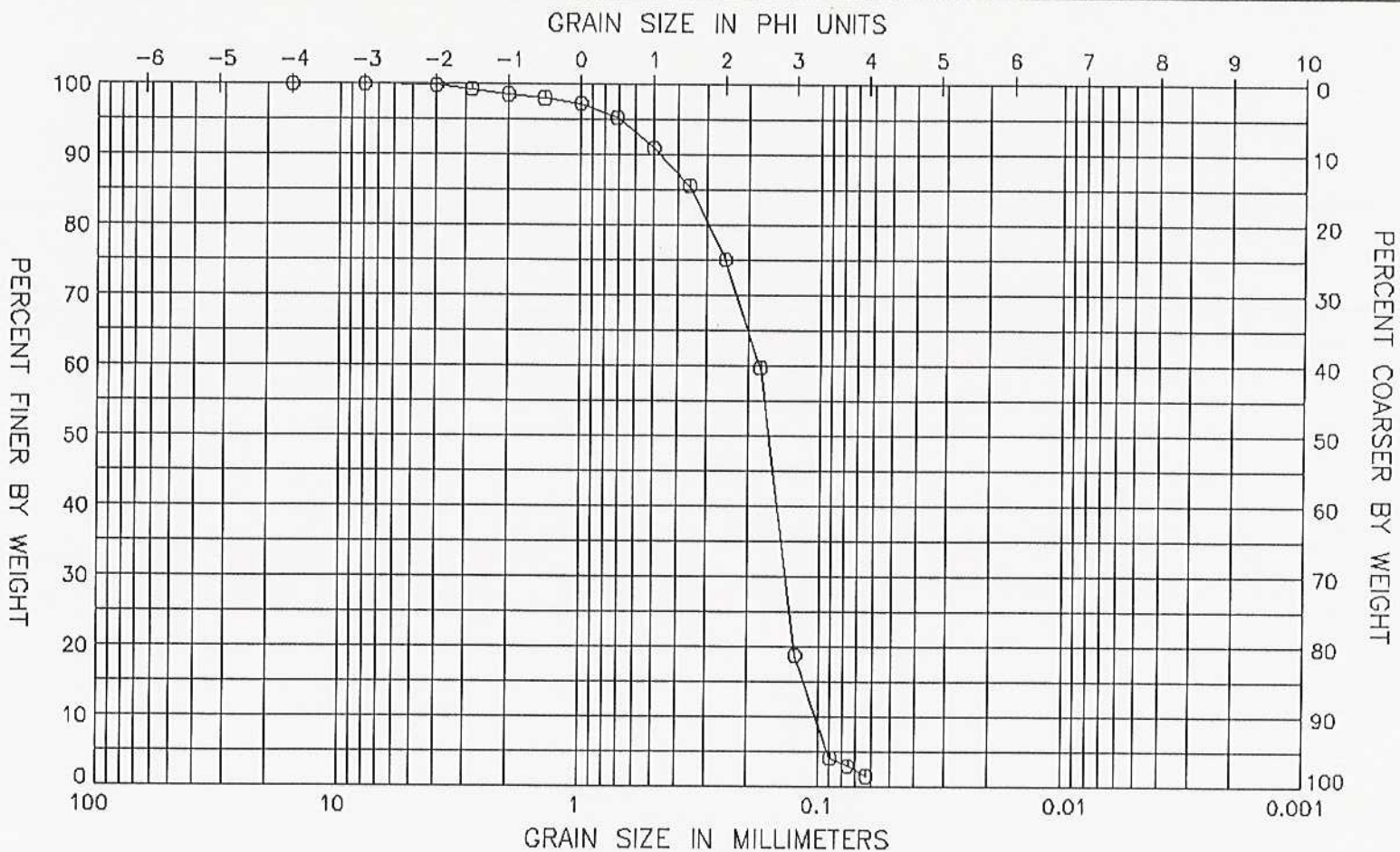
MEAN (PHI): 2.82 SORTING: .58
MEAN (mm): .14 MEDIAN (mm): .11
NOTE: MEAN WAS CALCULATED USING 5 POINT METHOD

MOMENT METHOD

MEAN (PHI): 2.88 SORTING: .95
MEAN (mm): .14

DATA FILE NAME: LKVC16S3.TAB

GRAIN SIZE DISTRIBUTION CURVE
LIDO KEY VIBRACORE JAN. 1995

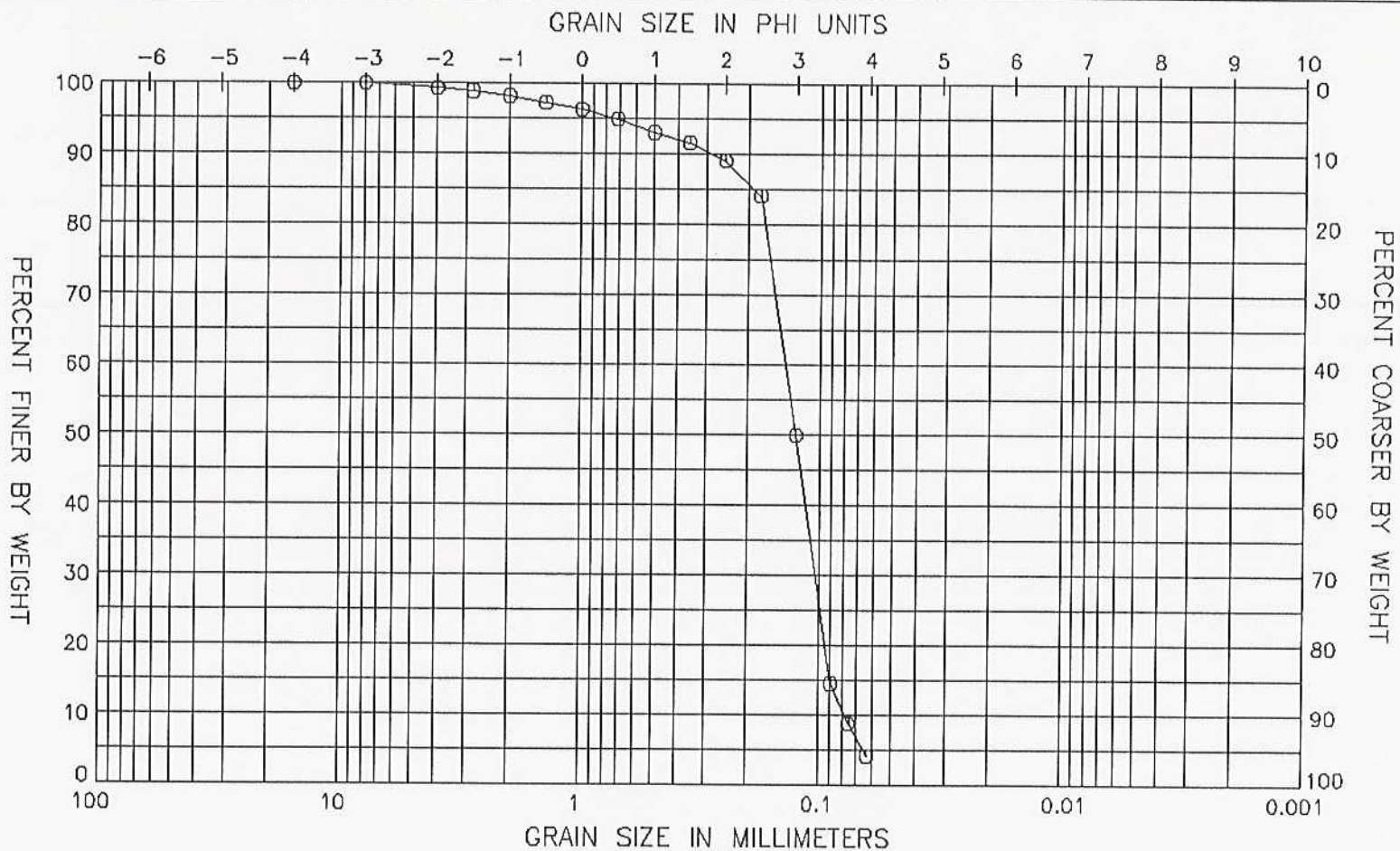


WENTWORTH CLASSIFICATION

PEBBLE	GRAVEL	SAND			SILT	CLAY
		COARSE	MED.	FINE		

SAMPLE NO.	SAMPLE ELEV.	SAMPLE DEPTH	USCS CLASS.	MEAN SIZE (mm)	MEDIAN SIZE (mm)	SORTING
LKVC-16 S10	-34.5	-1.0	SP	0.21	0.16	0.76

GRAIN SIZE DISTRIBUTION CURVE
LIDO KEY VIBRACORE JAN. 1995

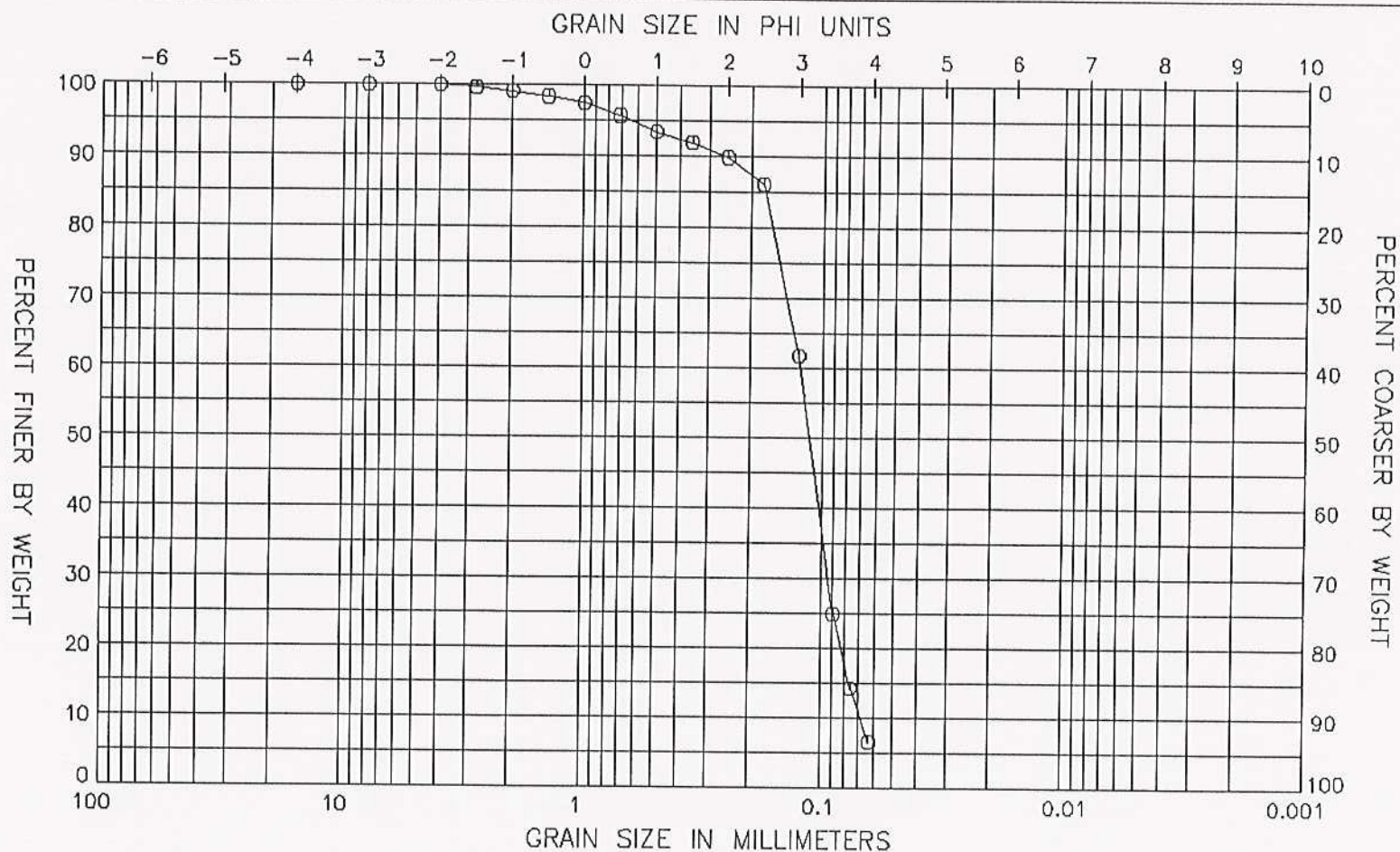


WENTWORTH CLASSIFICATION

PEBBLE	GRAVEL	SAND			SILT	CLAY
		COARSE	MED.	FINE		

SAMPLE NO.	SAMPLE ELEV.	SAMPLE DEPTH	USCS CLASS.	MEAN SIZE (mm)	MEDIAN SIZE (mm)	SORTING
LKVC-16 S20	-36.0	-2.5	SP-SM	0.16	0.13	0.49

GRAIN SIZE DISTRIBUTION CURVE
LIDO KEY VIBRACORE JAN. 1995

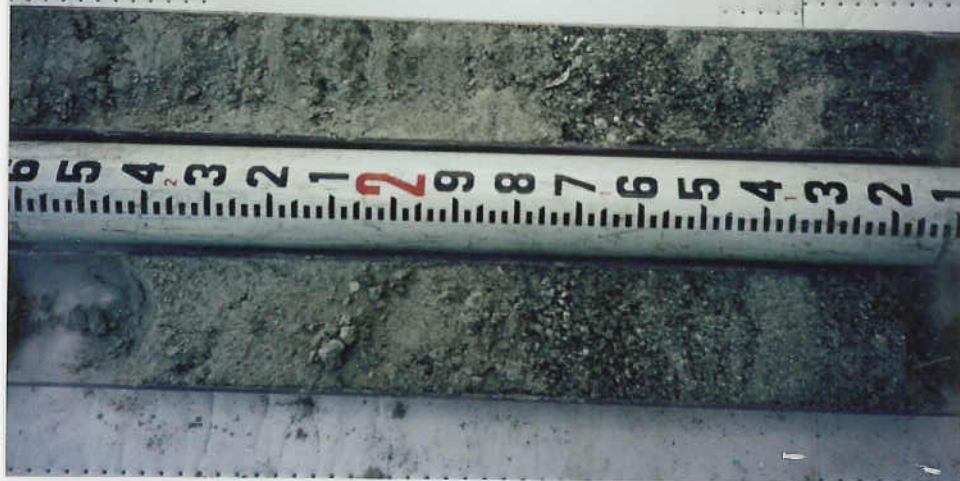


WENTWORTH CLASSIFICATION

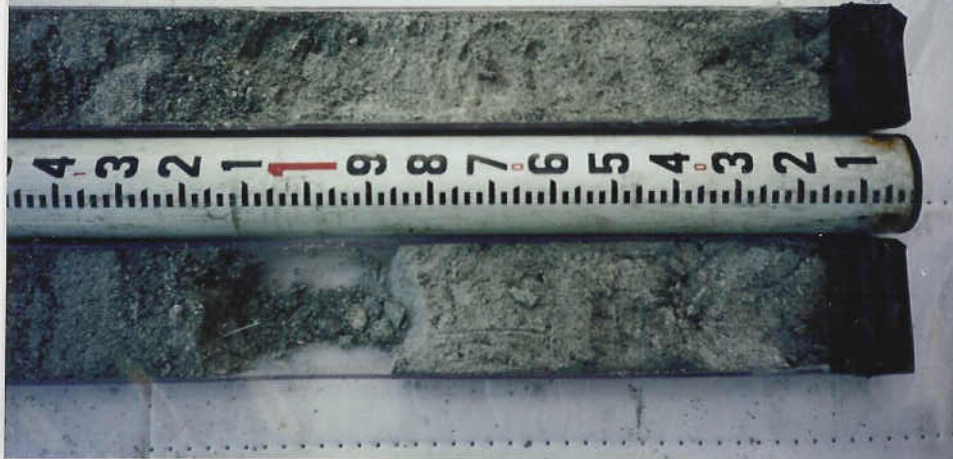
PEBBLE	GRAVEL	SAND			SILT	CLAY
		COARSE	MED.	FINE		

SAMPLE NO.	SAMPLE ELEV.	SAMPLE DEPTH	USCS CLASS.	MEAN SIZE (mm)	MEDIAN SIZE (mm)	SORTING
LKVC-16 S30	-37.8	-4.3	SS	0.14	0.11	0.58

CORE : LKVC-16
DATE : JAN. 27, 1995
COORDINATES :
N = 1085604
E = 272233
WATER DEPTH : 33.5'
SECTION : 1 OF 1

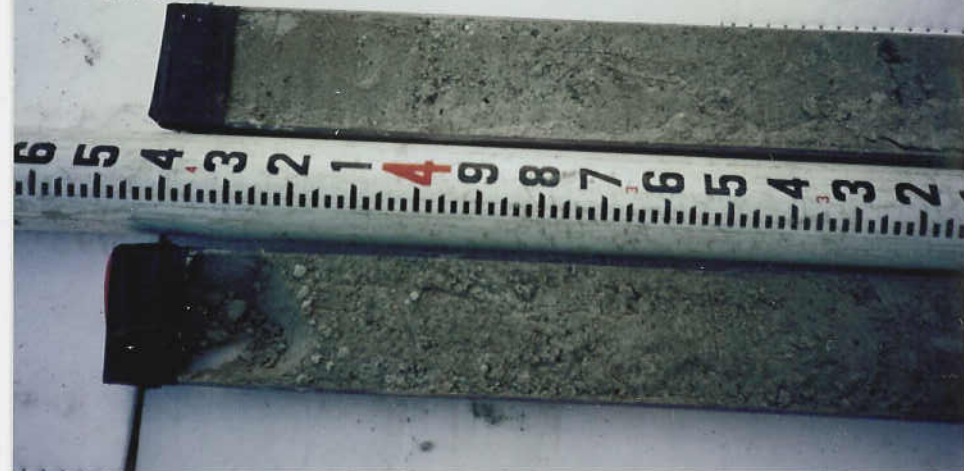


CORE : LKVC-16
DATE : JAN. 27, 1995
COORDINATES :
N = 1085604
E = 272233
WATER DEPTH : 33.5'
SECTION : 1 OF 1



LKVC-16

CORE : LKVC-16
DATE : JAN. 27, 1995
COORDINATES :
N = 1085604
E = 272233
WATER DEPTH : 33.5'
SECTION : 1 OF 1



CORE : LKVC-16
DATE : JAN. 27, 1995
COORDINATES :
N = 1085604
E = 272233
WATER DEPTH : 33.5'
SECTION : 1 OF 1

