

COLLIER COUNTY  
CCVC-03-39  
0.0' - 2.0'



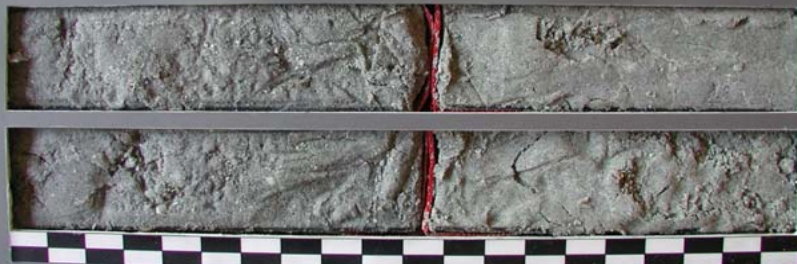
COASTAL PLANNING & ENGINEERING, INC.

COLLIER COUNTY  
CCVC-03-39  
2.0' - 4.0'



COASTAL PLANNING & ENGINEERING, INC.

COLLIER COUNTY  
CCVC-03-39  
4.0' - 6.0'



COASTAL PLANNING & ENGINEERING, INC.

COLLIER COUNTY  
CCVC-03-39  
6.0' - 8.0'



COASTAL PLANNING & ENGINEERING, INC.

COLLIER COUNTY  
CCVC-03-39  
8.0' - 10.0'



COASTAL PLANNING & ENGINEERING, INC.

COLLIER COUNTY  
CCVC-03-39  
10.0' - 12.0'



COASTAL PLANNING & ENGINEERING, INC.

COLLIER COUNTY  
CCVC-03-39  
12.0' - 14.0'



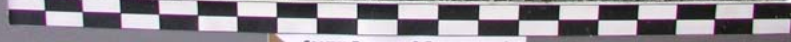
COASTAL PLANNING & ENGINEERING, INC.

COLLIER COUNTY  
CCVC-03-39  
14.0' - 16.0'



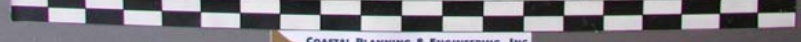
COASTAL PLANNING & ENGINEERING, INC.

COLLIER COUNTY  
CCVC-03-39  
16.0' - 18.0'



COASTAL PLANNING & ENGINEERING, INC.

COLLIER COUNTY  
CCVC-03-39  
18.0' - 19.5'



COASTAL PLANNING & ENGINEERING, INC.