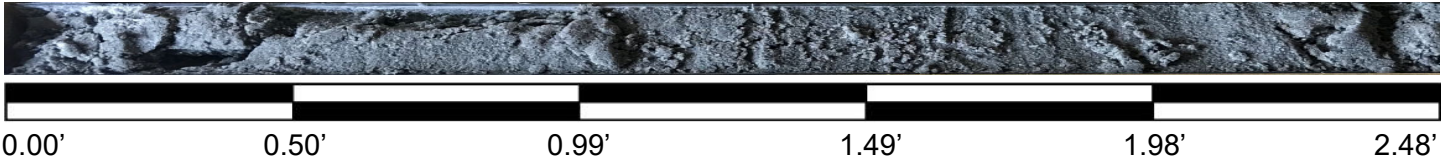


**Flagler Expedited Labs 3A**  
**Flagler County, Florida**  
MAE Project No. 0051-0098

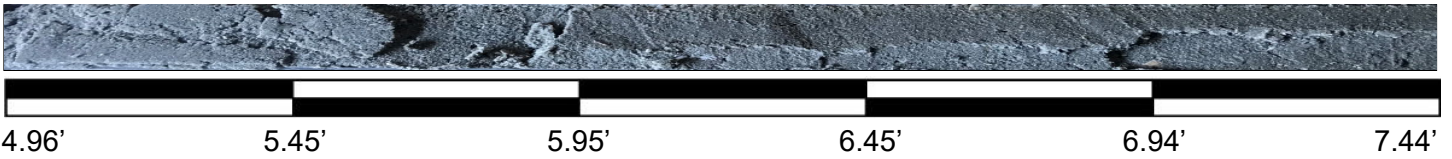
**VB-FC18-33**  
0.0' to 2.48'



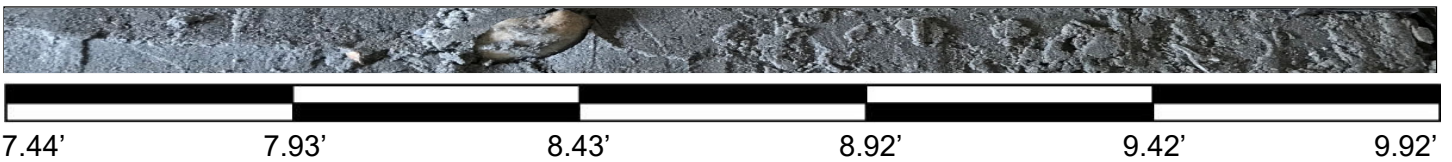
**VB-FC18-33**  
2.48' to 4.96'



**VB-FC18-33**  
4.96' to 7.44'



**VB-FC18-33**  
7.44' to 9.92'



**Flagler Expedited Labs 3A**  
**Flagler County, Florida**  
MAE Project No. 0051-0098

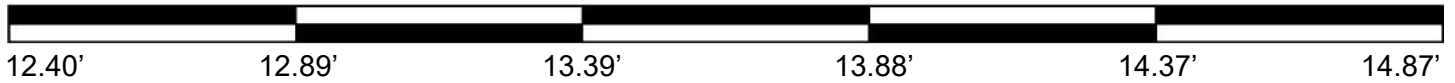
**VB-FC18-33**

9.92' to 12.40'



**VB-FC18-33**

12.40' to 14.87'



**VB-FC18-33**

14.87' to 17.38'



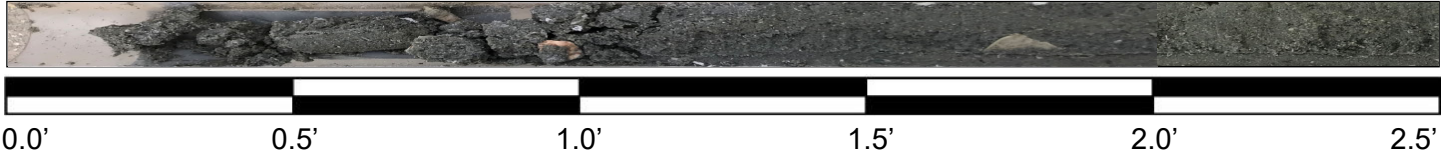
**VB-FC18-33**

17.38' to 19.88'

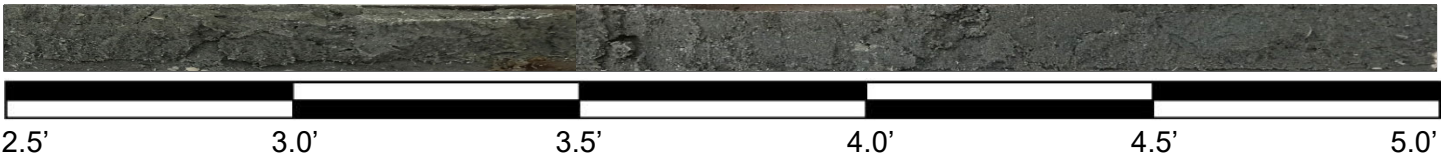


**Flagler Expedited Labs 3A**  
**Flagler County, Florida**  
MAE Project No. 0051-0098

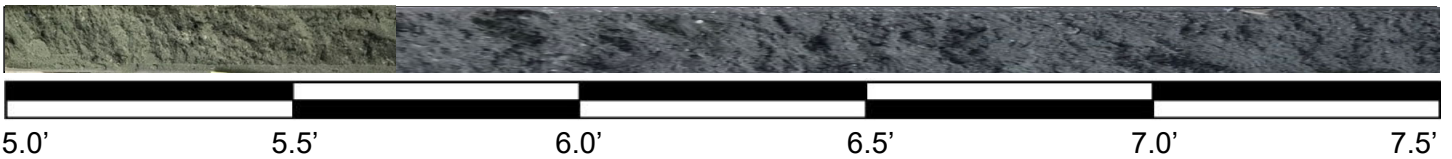
**VB-FC18-34**  
0.0' to 2.5'



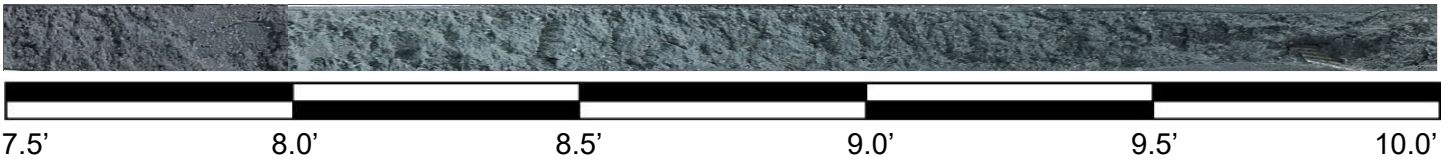
**VB-FC18-34**  
2.5' to 5.0'



**VB-FC18-34**  
5.0' to 7.5'

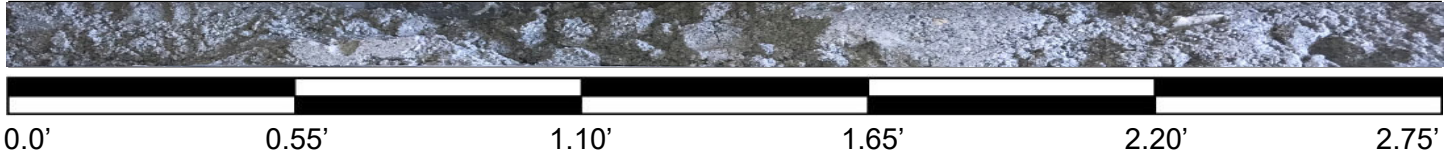


**VB-FC18-34**  
7.5' to 10.0'



**Flagler Expedited Labs 3A**  
**Flagler County, Florida**  
MAE Project No. 0051-0098

**VB-FC18-35**  
0.0' to 2.75'



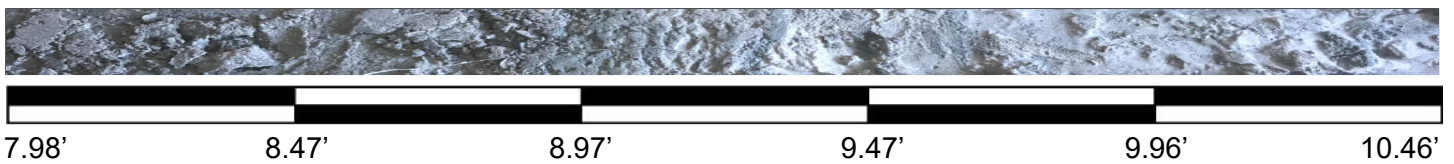
**VB-FC18-35**  
2.75' to 5.50'



**VB-FC18-35**  
5.50' to 7.98'



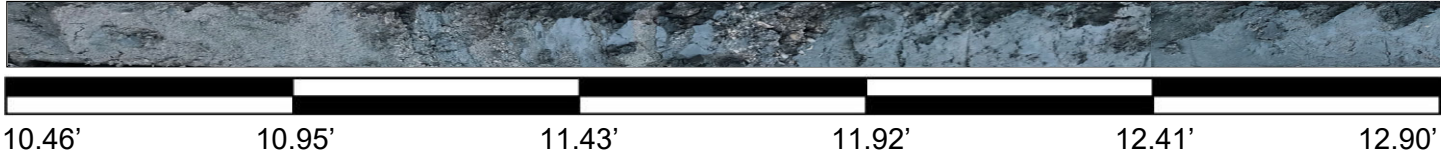
**VB-FC18-35**  
7.98' to 10.46'



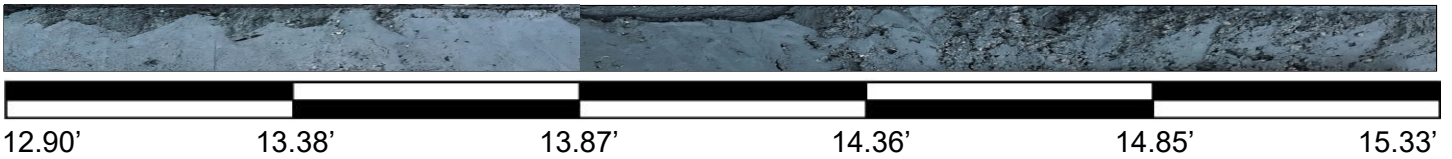


**Flagler Expedited Labs 3A**  
**Flagler County, Florida**  
MAE Project No. 0051-0098

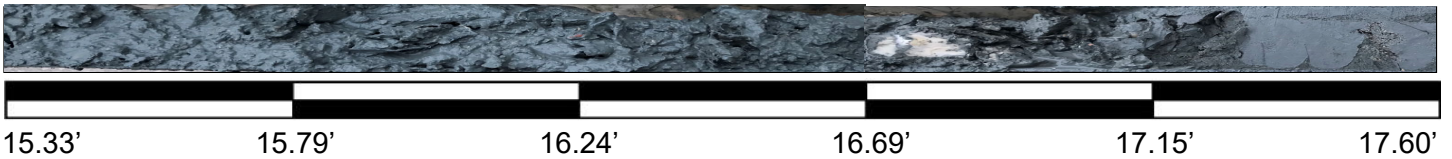
**VB-FC18-35**  
10.46' to 12.90'



**VB-FC18-35**  
12.90' to 15.33'



**VB-FC18-35**  
15.33' to 17.60'

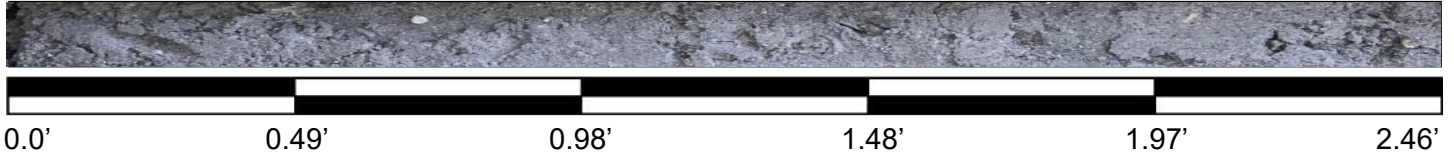


**VB-FC18-35**  
17.60' to 19.87'

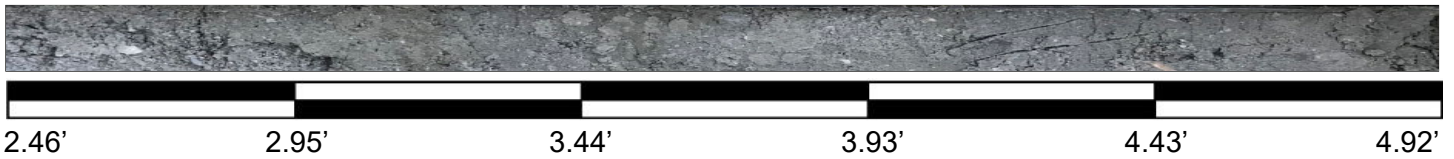


**Flagler Expedited Labs 3A**  
**Flagler County, Florida**  
MAE Project No. 0051-0098

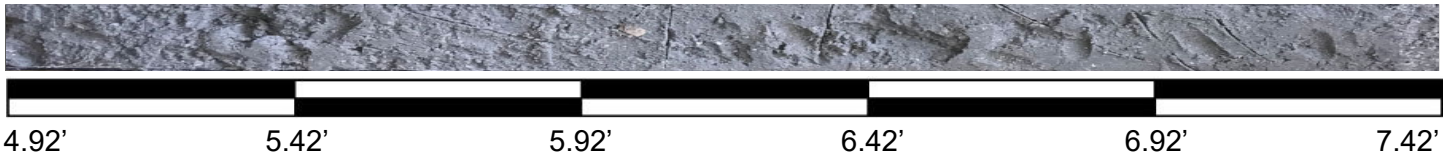
**VB-FC18-36**  
0.0' to 2.46'



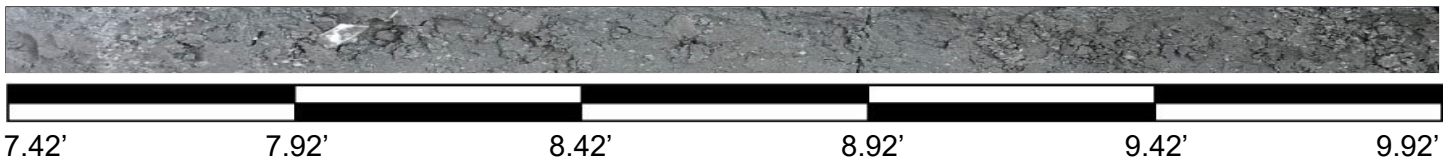
**VB-FC18-36**  
2.46' to 4.92'



**VB-FC18-36**  
4.92' to 7.42'

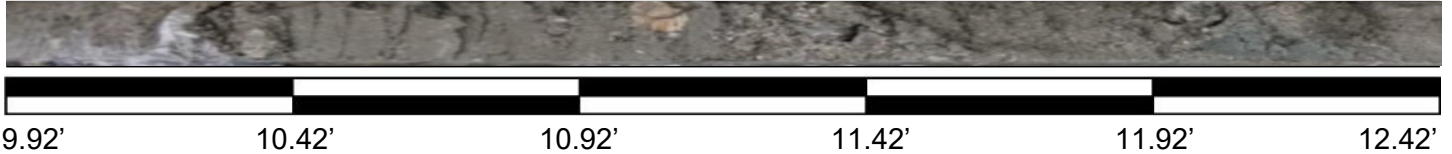


**VB-FC18-36**  
7.42' to 9.92'

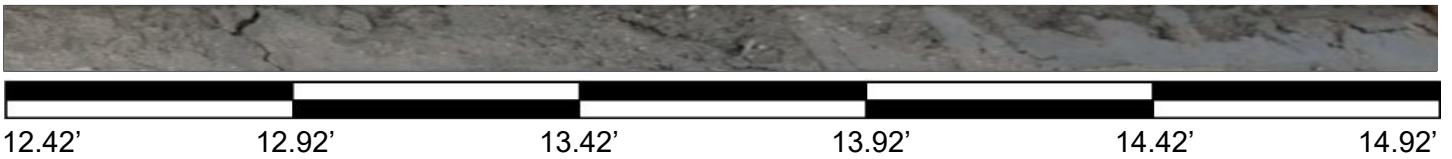


**Flagler Expedited Labs 3A**  
**Flagler County, Florida**  
MAE Project No. 0051-0098

**VB-FC18-36**  
9.92' to 12.42'



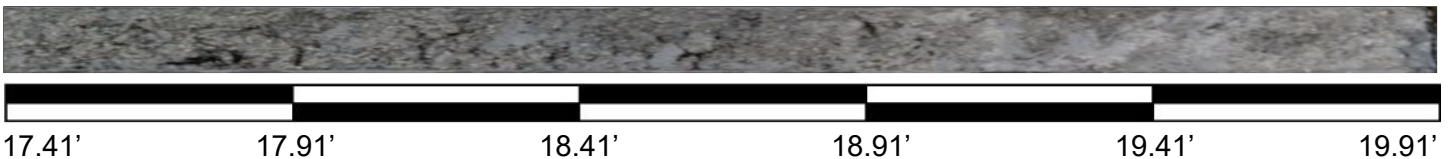
**VB-FC18-36**  
12.42' to 14.92'



**VB-FC18-36**  
14.92' to 17.41'

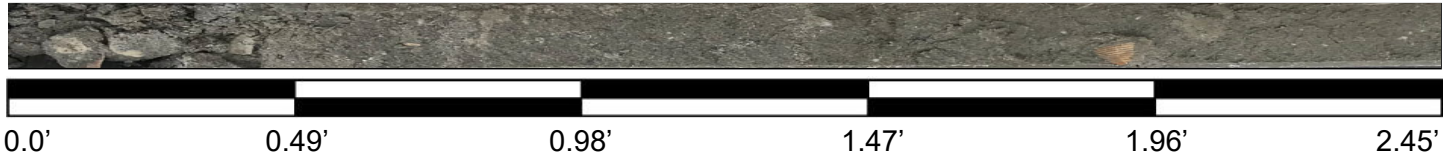


**VB-FC18-36**  
17.41' to 19.91'

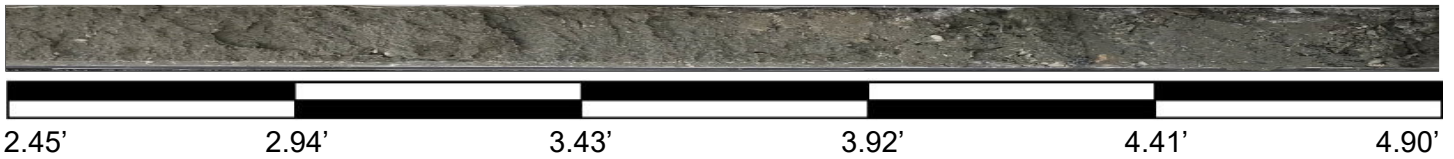


**Flagler Expedited Labs 3A**  
**Flagler County, Florida**  
MAE Project No. 0051-0098

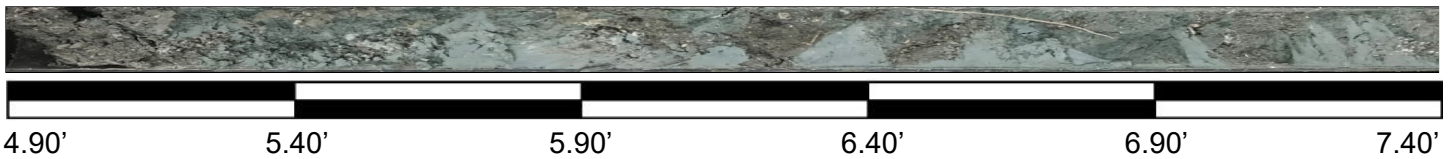
**VB-FC18-37**  
0.0' to 2.45'



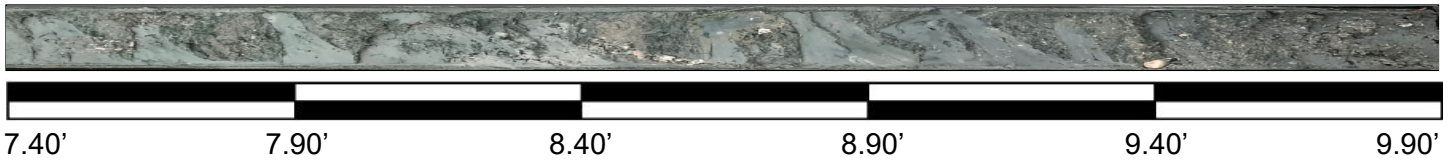
**VB-FC18-37**  
2.45' to 4.90'



**VB-FC18-37**  
4.90' to 7.40'



**VB-FC18-37**  
7.40' to 9.90'



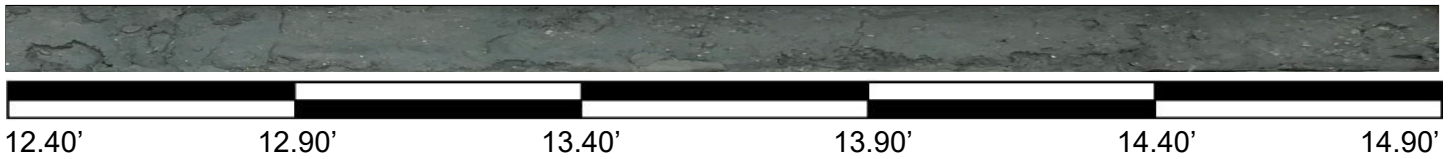


**Flagler Expedited Labs 3A**  
**Flagler County, Florida**  
MAE Project No. 0051-0098

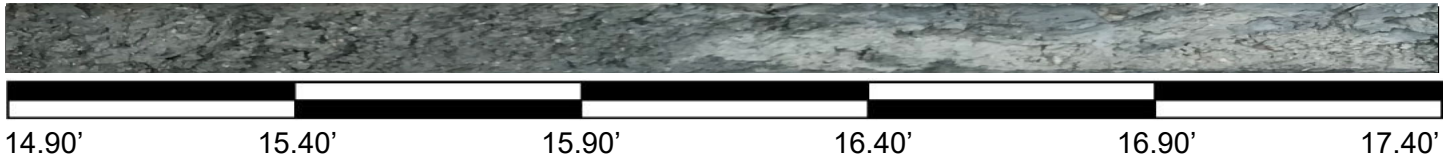
**VB-FC18-37**  
9.90' to 12.40'



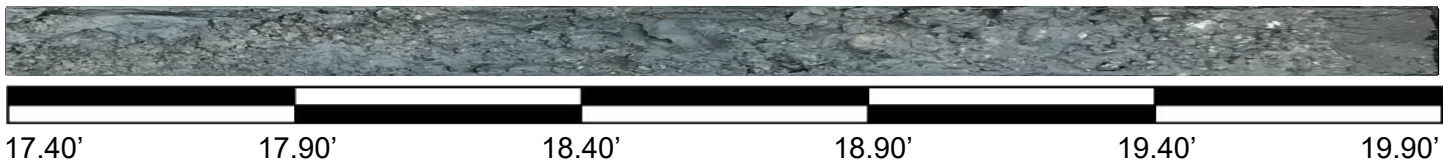
**VB-FC18-37**  
12.40' to 14.90'



**VB-FC18-37**  
14.90' to 17.40'

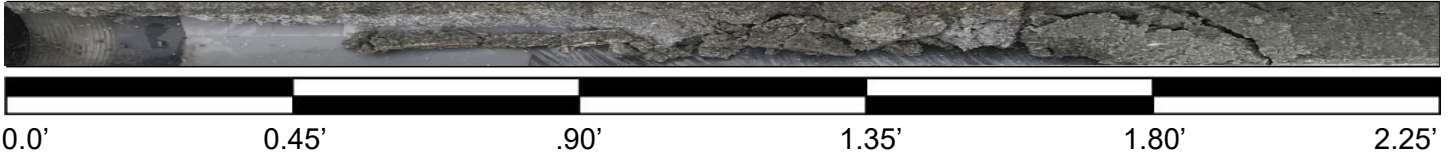


**VB-FC18-37**  
17.40' to 19.90'

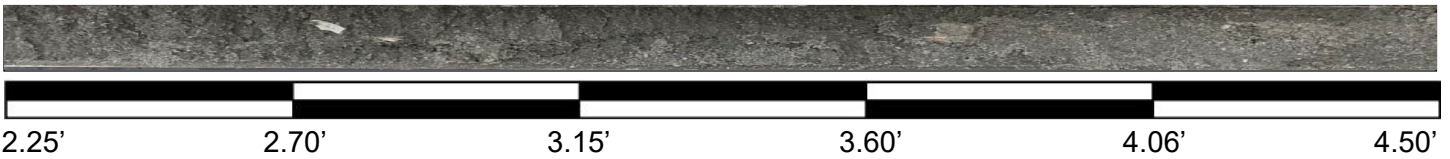


**Flagler Expedited Labs 3A**  
**Flagler County, Florida**  
MAE Project No. 0051-0098

**VB-FC18-38**  
0.0' to 2.25'



**VB-FC18-38**  
2.25' to 4.50'



**VB-FC18-38**  
4.50' to 6.96'



**VB-FC18-38**  
6.96' to 9.42'



**Flagler Expedited Labs 3A**  
**Flagler County, Florida**  
MAE Project No. 0051-0098

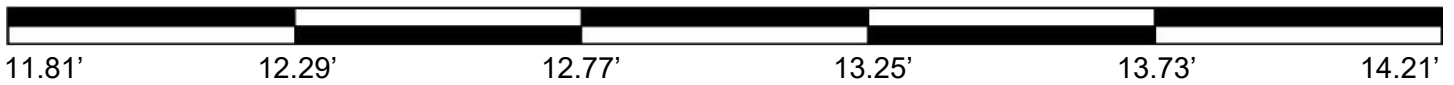
**VB-FC18-38**

9.42' to 11.81'



**VB-FC18-38**

11.81' to 14.21'



**VB-FC18-38**

14.21' to 16.41'



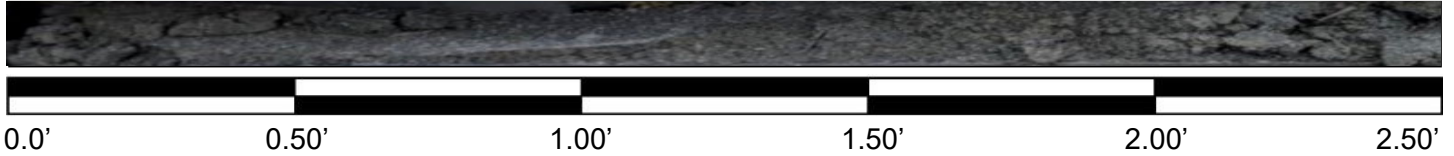
**VB-FC18-38**

16.41' to 18.62'

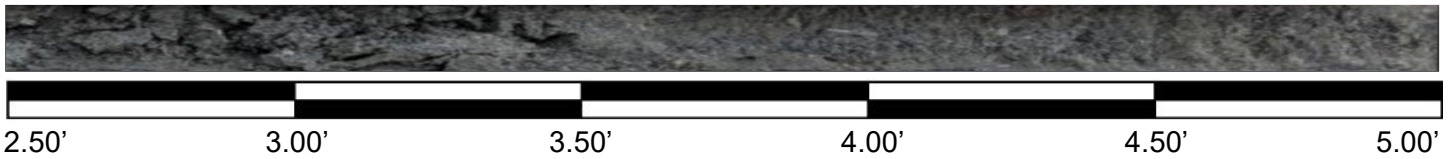


**Flagler Expedited Labs 3A**  
**Flagler County, Florida**  
MAE Project No. 0051-0098

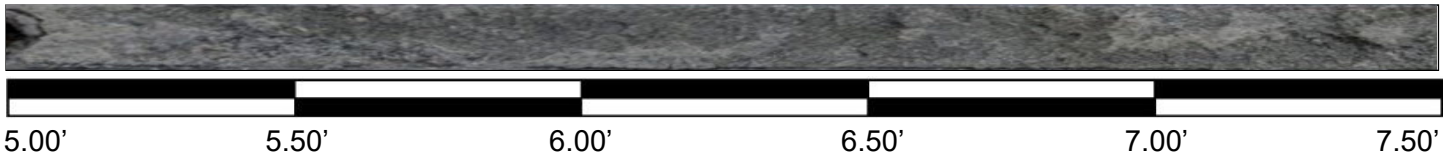
**VB-FC18-39**  
0.0' to 2.50'



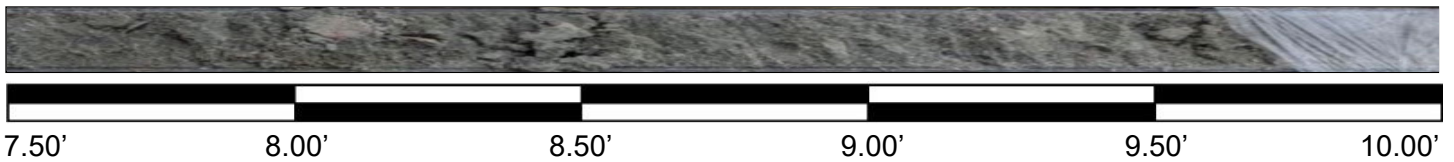
**VB-FC18-39**  
2.50' to 5.00'



**VB-FC18-39**  
5.00' to 7.50'



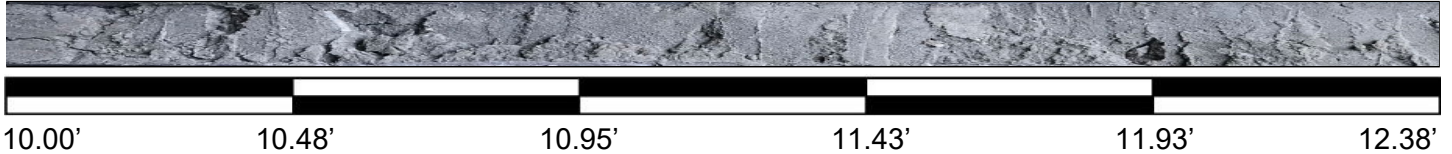
**VB-FC18-39**  
7.50' to 10.00'



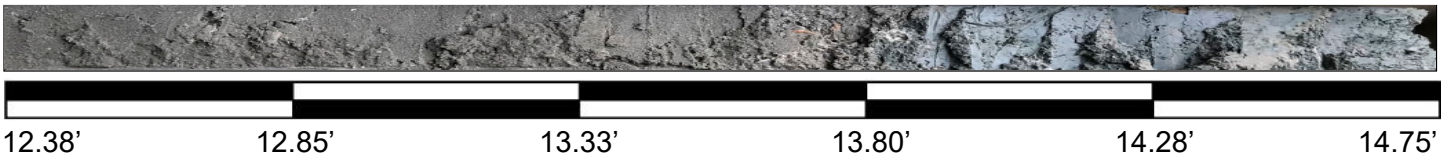


**Flagler Expedited Labs 3A**  
**Flagler County, Florida**  
MAE Project No. 0051-0098

**VB-FC18-39**  
10.00' to 12.38'



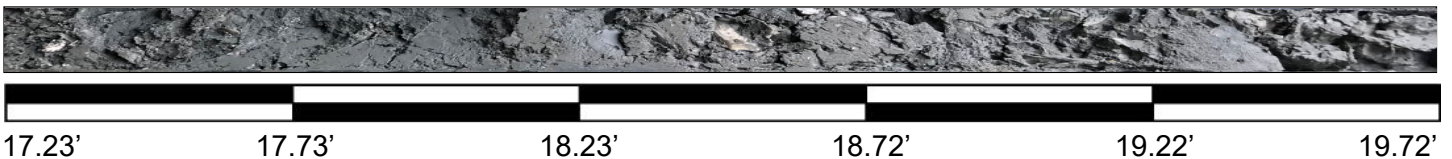
**VB-FC18-39**  
12.38' to 14.75'



**VB-FC18-39**  
14.75' to 17.23'

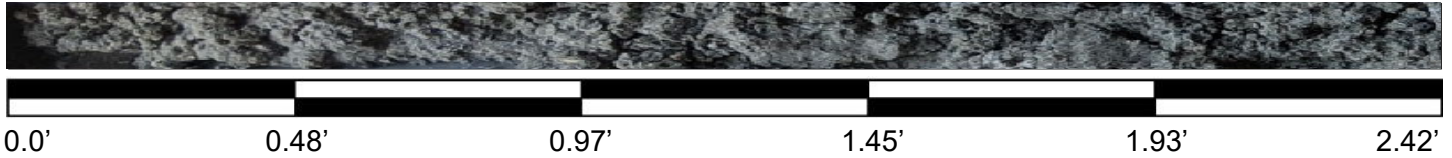


**VB-FC18-39**  
17.23' to 19.72'

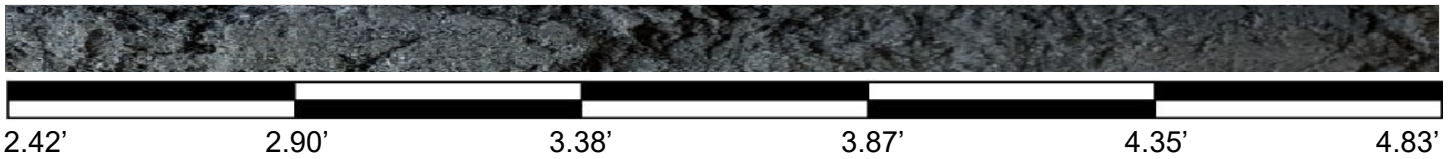


**Flagler Expedited Labs 3A**  
**Flagler County, Florida**  
MAE Project No. 0051-0098

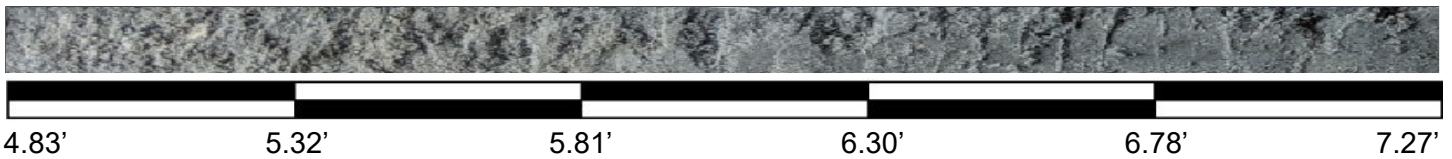
**VB-FC18-40**  
0.0' to 2.42'



**VB-FC18-40**  
2.42' to 4.83'



**VB-FC18-40**  
4.83' to 7.27'

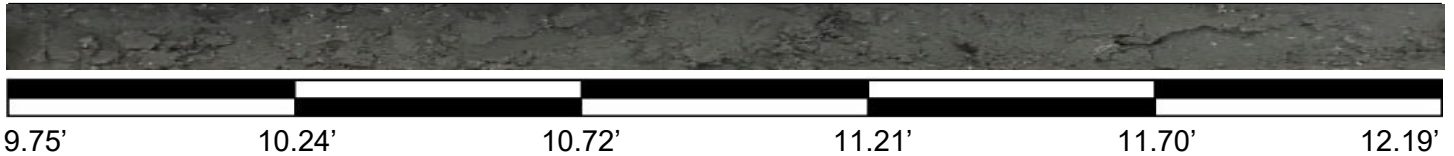


**VB-FC18-40**  
7.27' to 9.75'

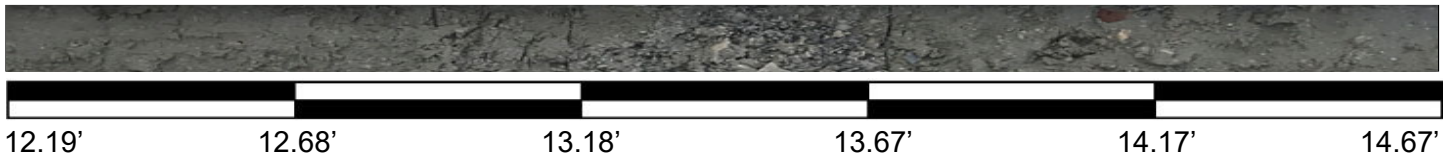


**Flagler Expedited Labs 3A**  
**Flagler County, Florida**  
MAE Project No. 0051-0098

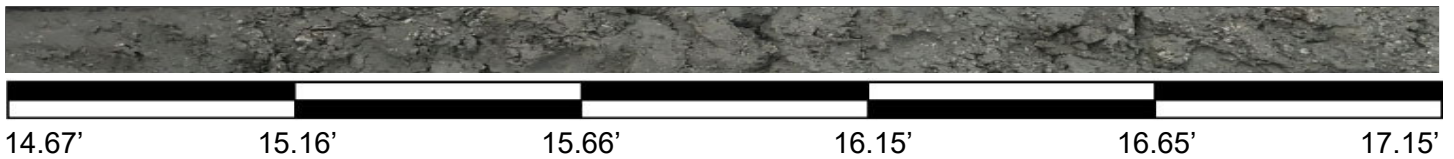
**VB-FC18-40**  
9.75' to 12.19'



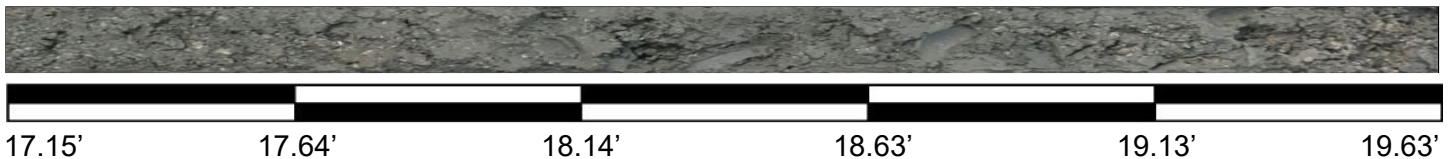
**VB-FC18-40**  
12.19' to 14.67'



**VB-FC18-40**  
14.67' to 17.15'



**VB-FC18-40**  
17.15' to 19.63'



**Flagler Expedited Labs 3A**  
**Flagler County, Florida**  
MAE Project No. 0051-0098

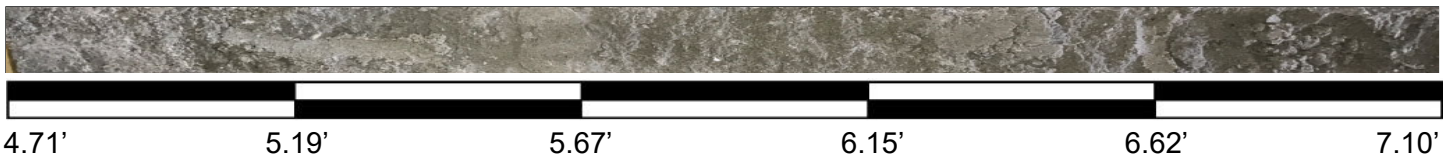
**VB-FC18-41**  
0.0' to 2.35'



**VB-FC18-41**  
2.35' to 4.71'



**VB-FC18-41**  
4.71' to 7.10'



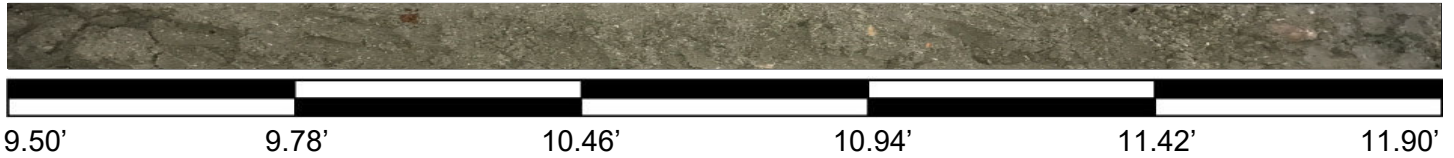
**VB-FC18-41**  
7.10' to 9.50'





**Flagler Expedited Labs 3A**  
**Flagler County, Florida**  
MAE Project No. 0051-0098

**VB-FC18-41**  
9.50' to 11.90'



**VB-FC18-41**  
11.90' to 14.29'



**VB-FC18-41**  
14.29' to 16.74'



**VB-FC18-41**  
16.74' to 19.18'

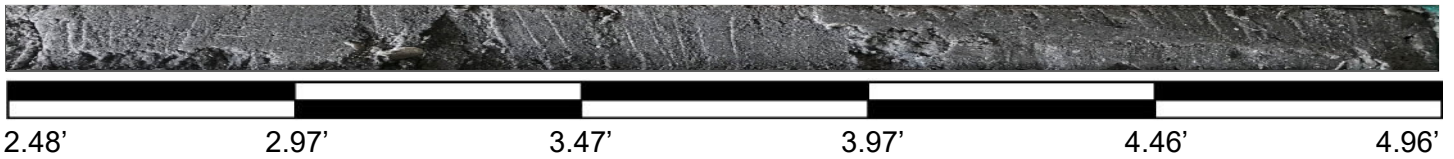


**Flagler Expedited Labs 3A**  
**Flagler County, Florida**  
MAE Project No. 0051-0098

**VB-FC18-42**  
0.0' to 2.48'



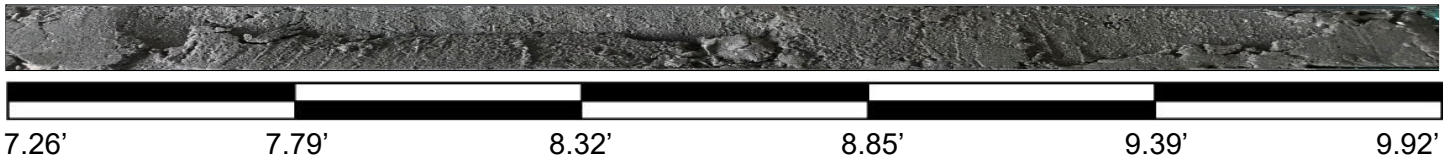
**VB-FC18-42**  
2.48' to 4.96'



**VB-FC18-42**  
4.96' to 7.26'

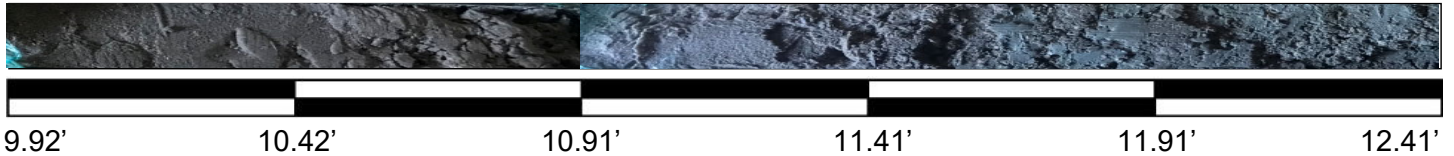


**VB-FC18-42**  
7.26' to 9.92'



**Flagler Expedited Labs 3A**  
**Flagler County, Florida**  
MAE Project No. 0051-0098

**VB-FC18-42**  
9.92' to 12.41'



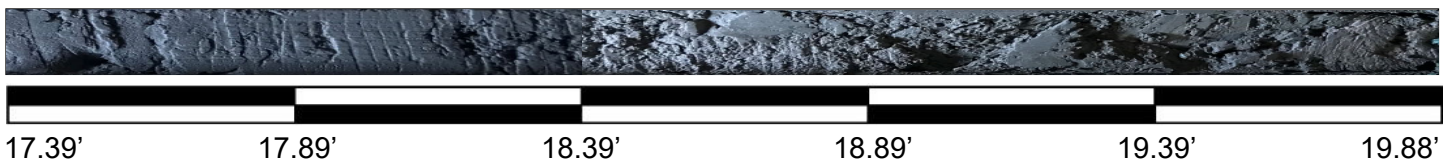
**VB-FC18-42**  
12.41' to 14.90'



**VB-FC18-42**  
14.90' to 17.39'

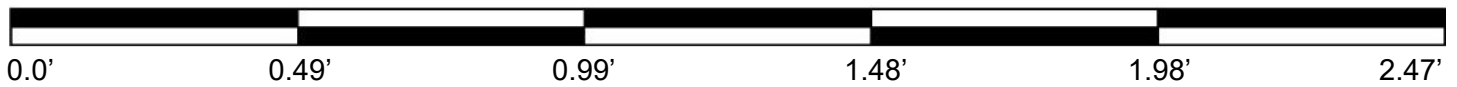


**VB-FC18-42**  
17.39' to 19.88'

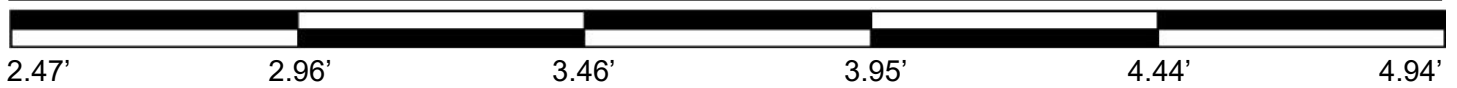
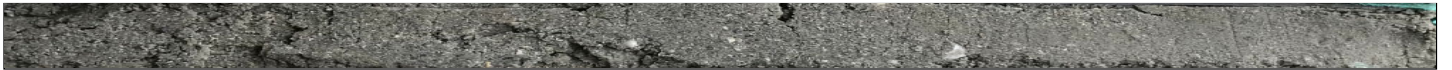


**Flagler Expedited Labs 3A**  
**Flagler County, Florida**  
MAE Project No. 0051-0098

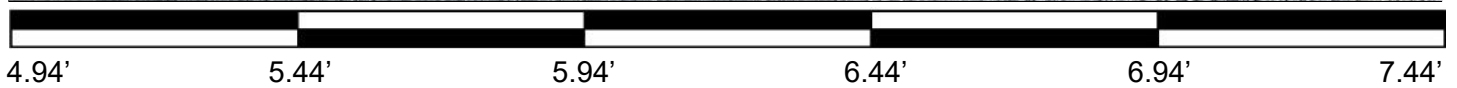
**VB-FC18-43**  
0.0' to 2.47'



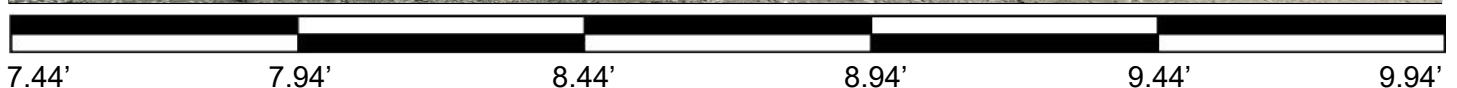
**VB-FC18-43**  
2.47' to 4.94'



**VB-FC18-43**  
4.94' to 7.44'



**VB-FC18-43**  
7.44' to 9.94'





**Flagler Expedited Labs 3A**  
**Flagler County, Florida**  
MAE Project No. 0051-0098

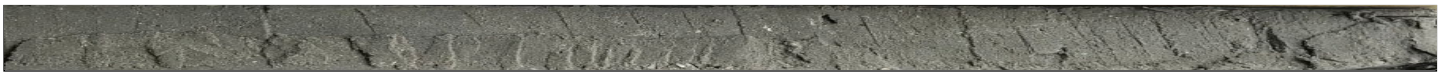
**VB-FC18-43**

9.94' to 12.40'



**VB-FC18-43**

12.40' to 14.86'



**VB-FC18-43**

14.86' to 17.37'



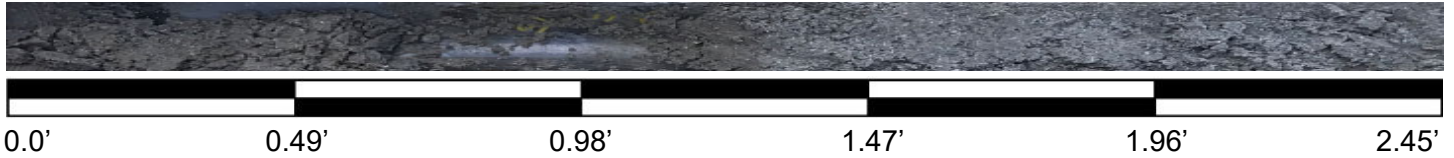
**VB-FC18-43**

17.37' to 19.88'



**Flagler Expedited Labs 3A**  
**Flagler County, Florida**  
MAE Project No. 0051-0098

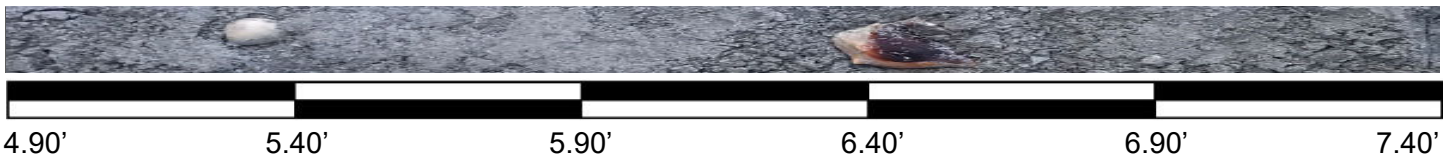
**VB-FC18-44**  
0.0' to 2.45'



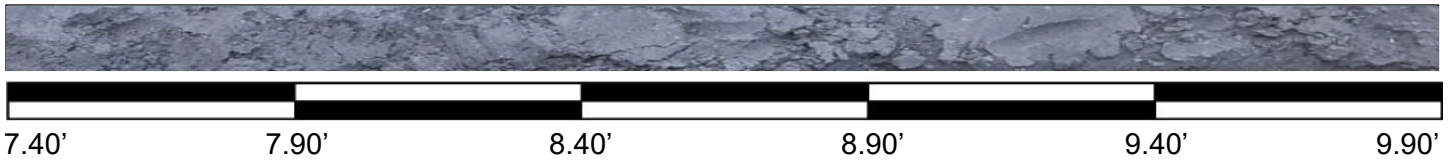
**VB-FC18-44**  
2.45' to 4.90'



**VB-FC18-44**  
4.90' to 7.40'



**VB-FC18-44**  
7.40' to 9.90'



**Flagler Expedited Labs 3A**  
**Flagler County, Florida**  
MAE Project No. 0051-0098

**VB-FC18-44**

9.90' to 12.40'



9.90' 10.40' 10.90' 11.40' 11.90' 12.40'

**VB-FC18-44**

12.40' to 14.90'



12.40' 12.90' 13.40' 13.90' 14.40' 14.90'

**VB-FC18-44**

14.90' to 17.40'



14.90' 15.40' 15.90' 16.40' 16.90' 17.40'

**VB-FC18-44**

17.40' to 19.90'



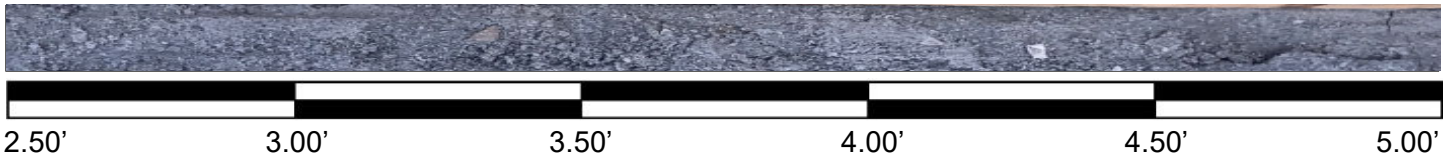
17.40' 17.90' 18.40' 18.90' 19.40' 19.90'

**Flagler Expedited Labs 3A**  
**Flagler County, Florida**  
MAE Project No. 0051-0098

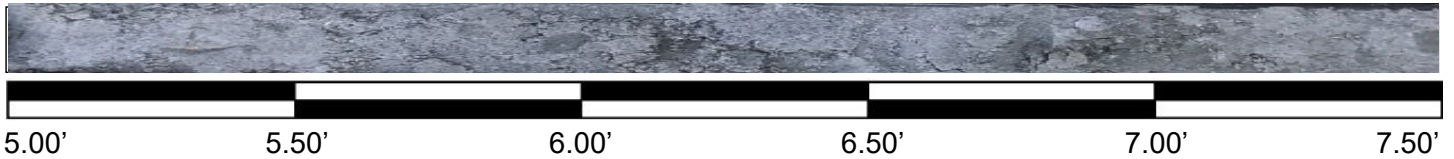
**VB-FC18-45**  
0.0' to 2.50'



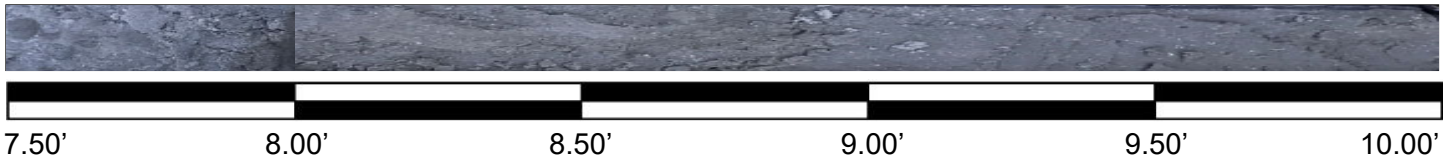
**VB-FC18-45**  
2.50' to 5.00'



**VB-FC18-45**  
5.00' to 7.50'



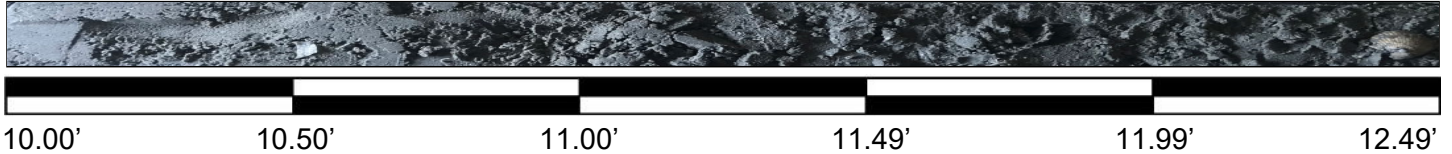
**VB-FC18-45**  
7.50' to 10.00'



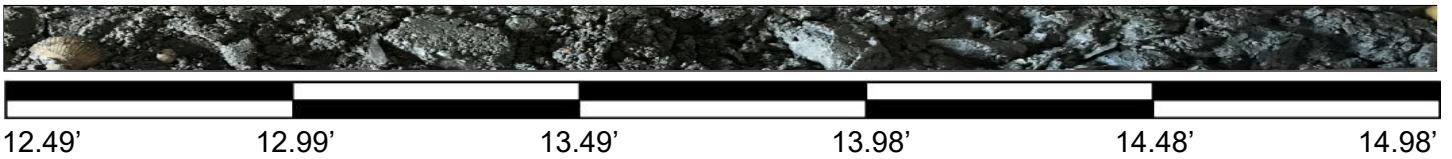


**Flagler Expedited Labs 3A**  
**Flagler County, Florida**  
MAE Project No. 0051-0098

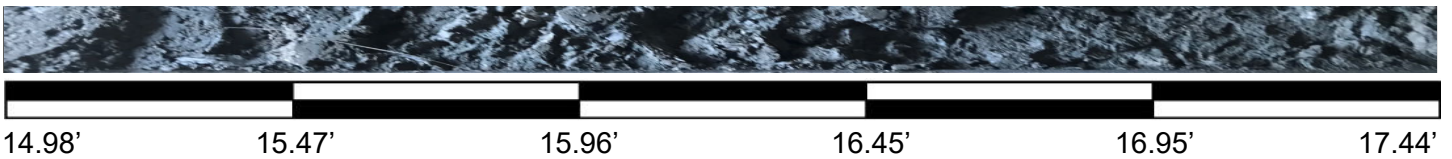
**VB-FC18-45**  
10.00' to 12.49'



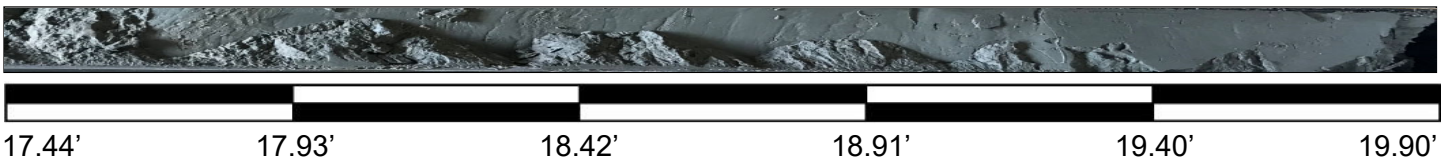
**VB-FC18-45**  
12.49' to 14.98'



**VB-FC18-45**  
14.98' to 17.44'

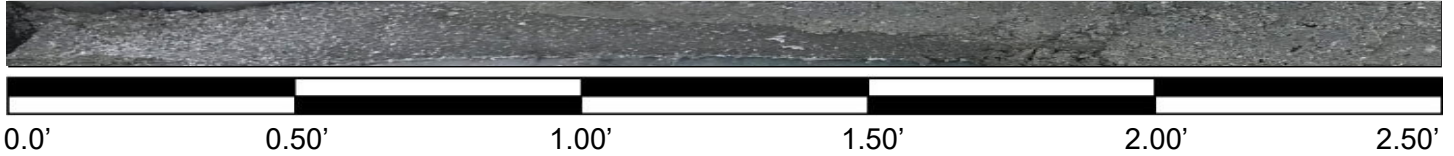


**VB-FC18-45**  
17.44' to 19.90'

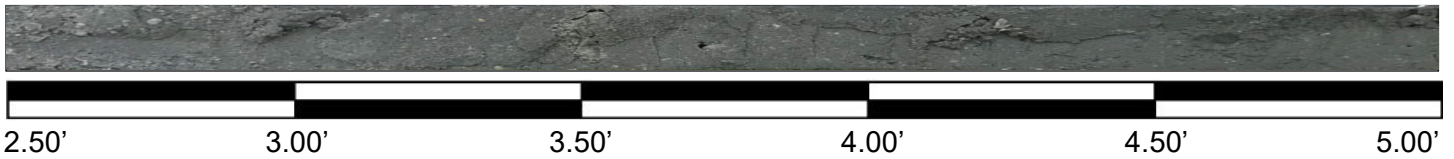


**Flagler Expedited Labs 3A**  
**Flagler County, Florida**  
MAE Project No. 0051-0098

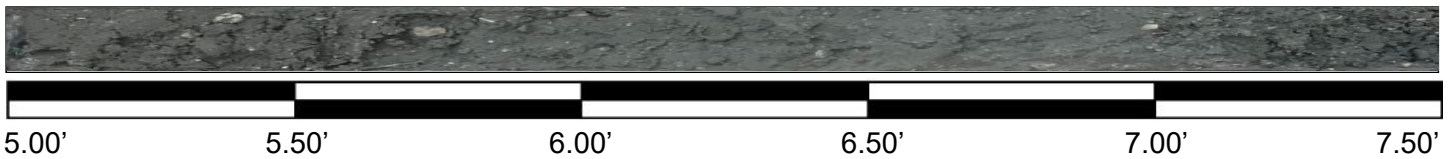
**VB-FC18-46**  
0.0' to 2.50'



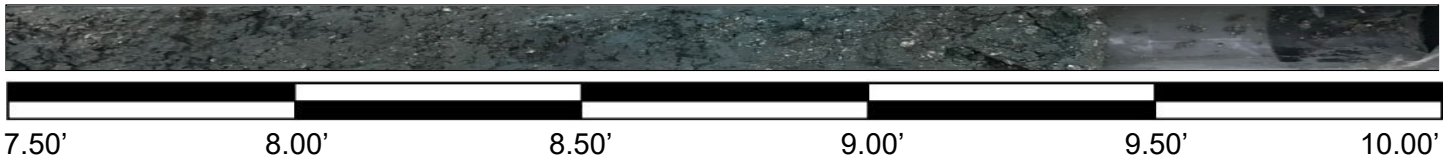
**VB-FC18-46**  
2.50' to 5.00'



**VB-FC18-46**  
5.00' to 7.50'

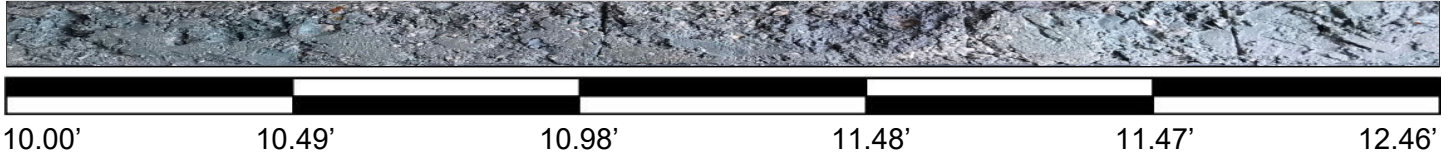


**VB-FC18-46**  
7.50' to 10.00'

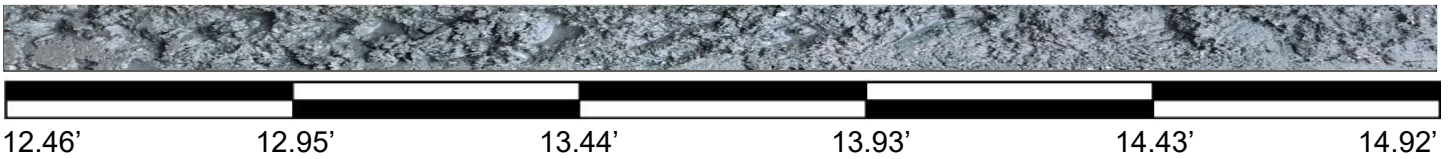


**Flagler Expedited Labs 3A**  
**Flagler County, Florida**  
MAE Project No. 0051-0098

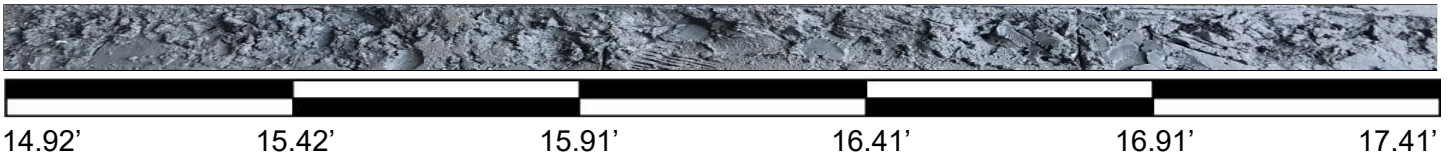
**VB-FC18-46**  
10.00' to 12.46'



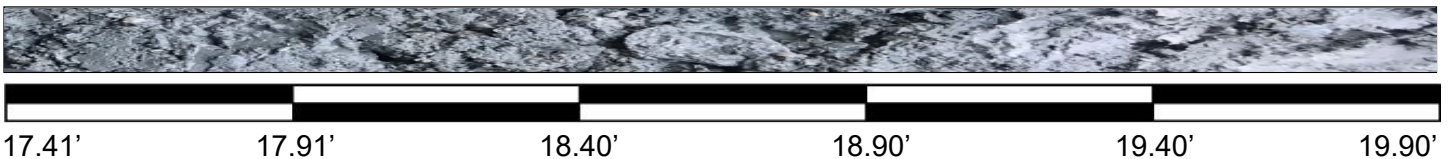
**VB-FC18-46**  
12.46' to 14.92'



**VB-FC18-46**  
14.92' to 17.41'

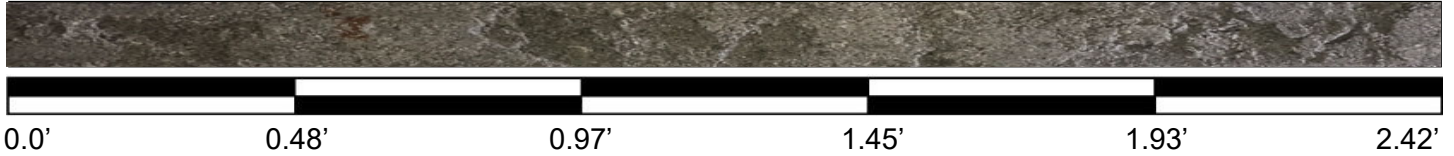


**VB-FC18-46**  
17.41' to 19.90'

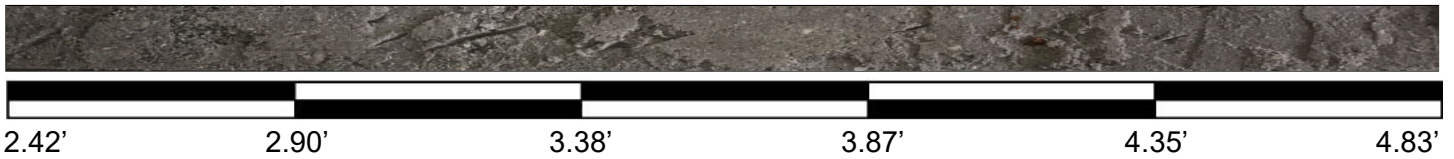


**Flagler Expedited Labs 3A**  
**Flagler County, Florida**  
MAE Project No. 0051-0098

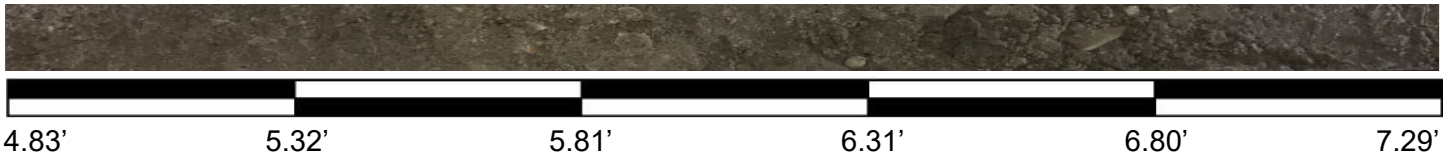
**VB-FC18-47**  
0.0' to 2.42'



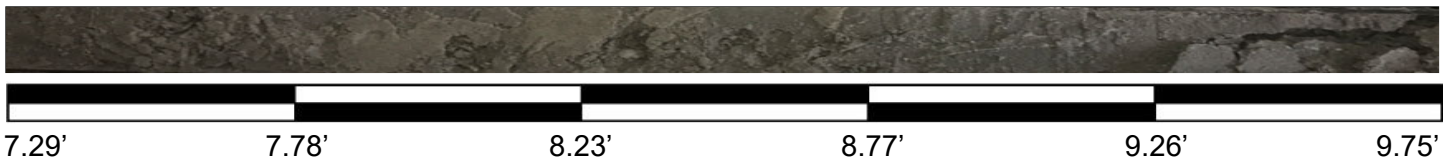
**VB-FC18-47**  
2.542' to 4.83'



**VB-FC18-47**  
4.83' to 7.29'



**VB-FC18-47**  
7.29' to 9.75'



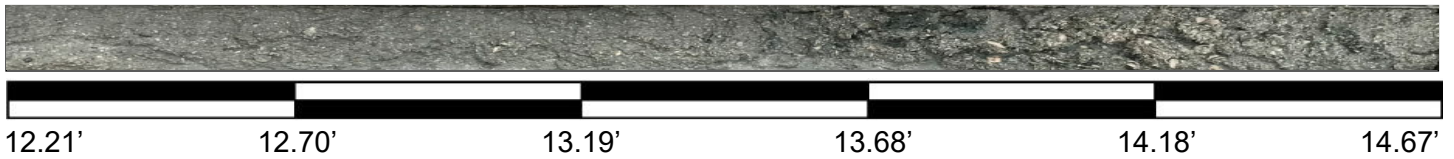


**Flagler Expedited Labs 3A**  
**Flagler County, Florida**  
MAE Project No. 0051-0098

**VB-FC18-47**  
9.75' to 12.21'



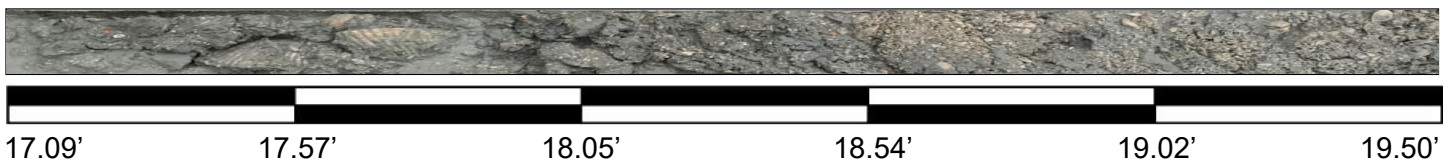
**VB-FC18-47**  
12.21' to 14.67'



**VB-FC18-47**  
14.67' to 17.09'

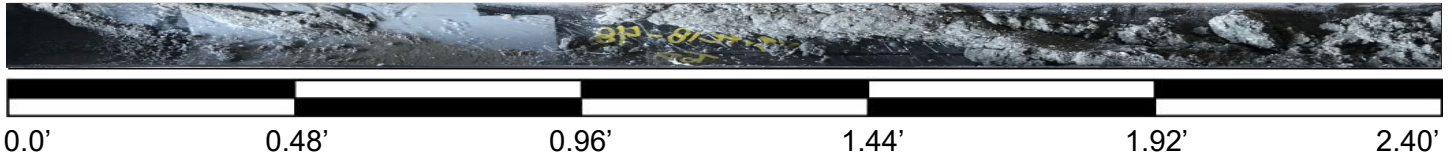


**VB-FC18-47**  
17.09' to 19.50'

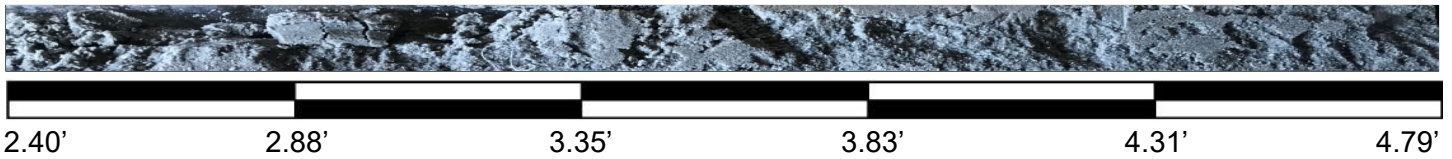


**Flagler Expedited Labs 3A**  
**Flagler County, Florida**  
MAE Project No. 0051-0098

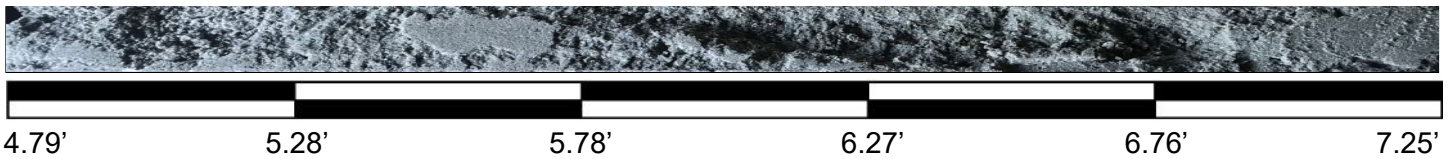
**VB-FC18-48**  
0.0' to 2.40'



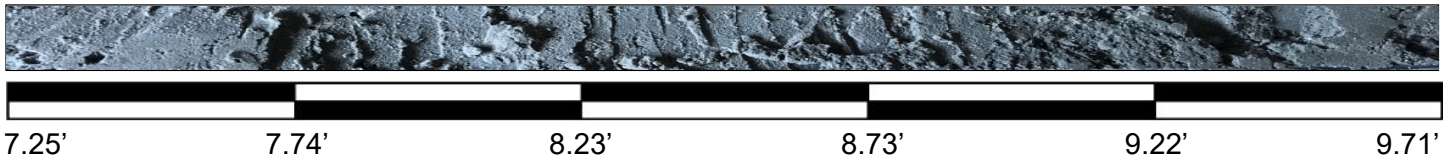
**VB-FC18-48**  
2.40' to 4.79'



**VB-FC18-48**  
4.79' to 7.25'



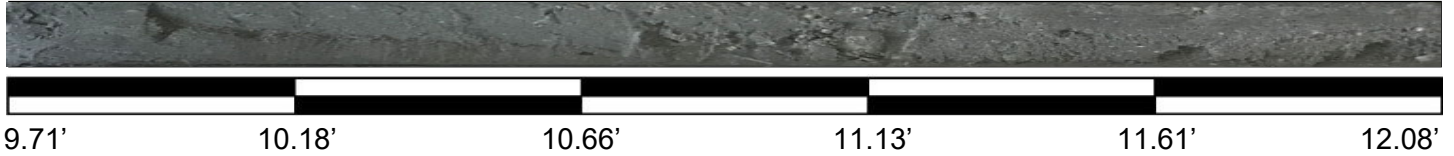
**VB-FC18-48**  
7.25' to 9.71'



**Flagler Expedited Labs 3A**  
**Flagler County, Florida**  
MAE Project No. 0051-0098

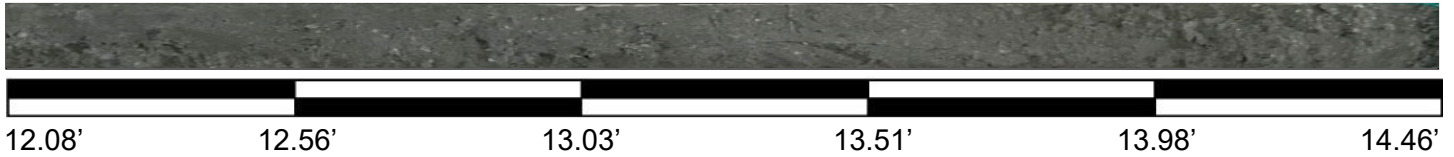
**VB-FC18-48**

9.71' to 12.08'



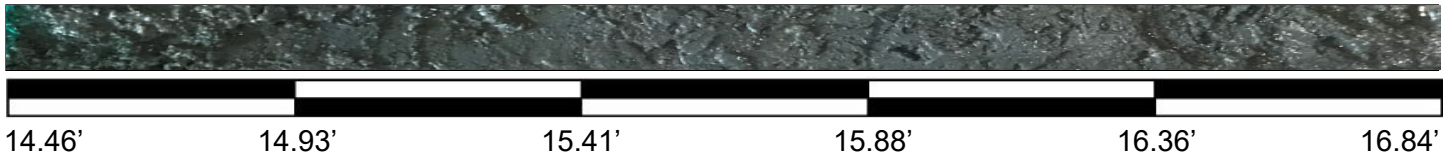
**VB-FC18-48**

12.08' to 14.46'



**VB-FC18-48**

14.46' to 16.84'



**VB-FC18-48**

16.84' to 19.21'

